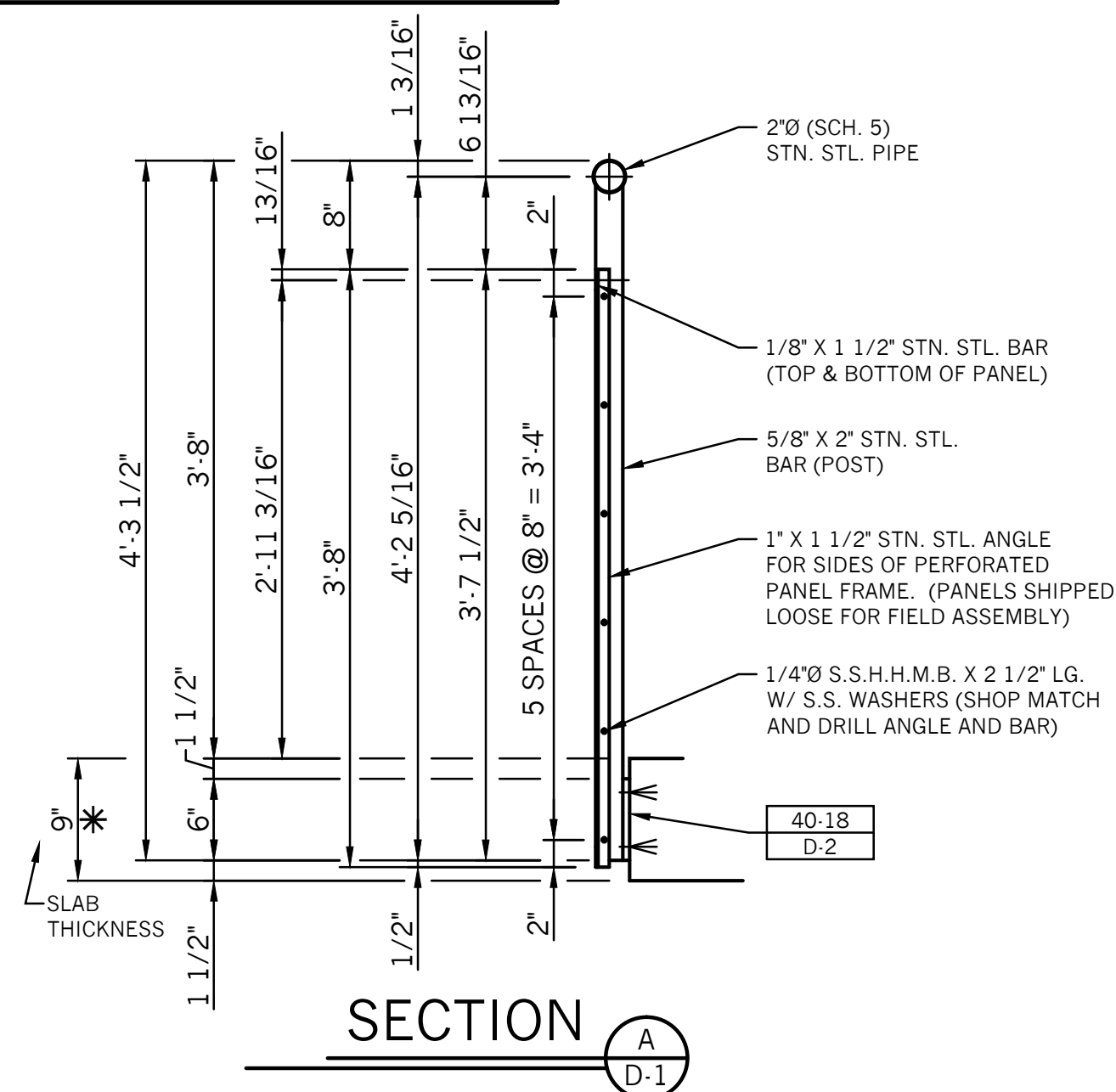
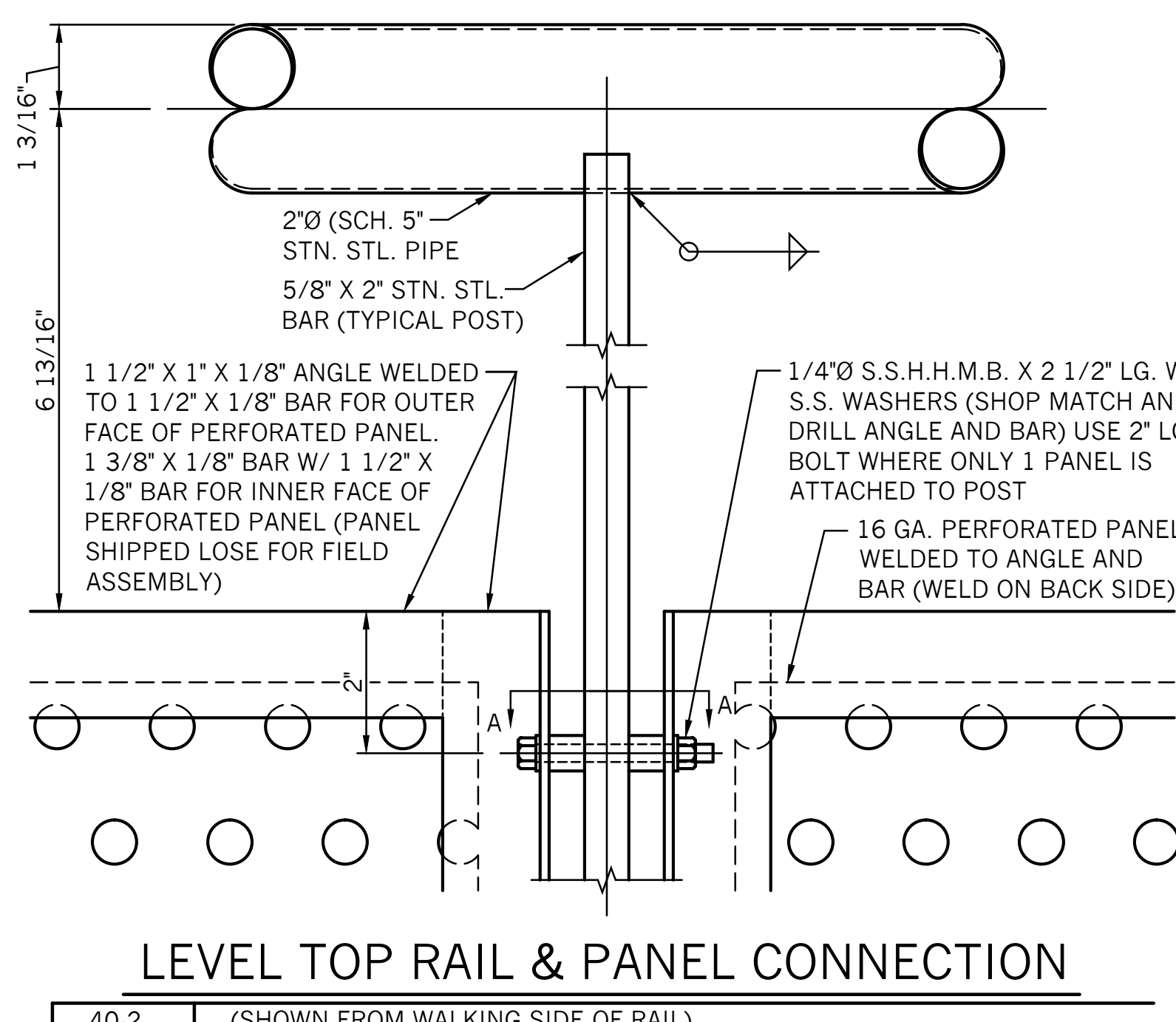


THESE DRAWINGS ARE THE PROPERTY OF TUTTLE ALUMINUM & BRONZE, INC. FISHERS INDIANA AND SHALL NOT BE REPRODUCED OR COPIED OR USED AS THE BASIS FOR THE MANUFACTURE OR SALE OF ITEMS SHOWN WITHOUT PERMISSION.

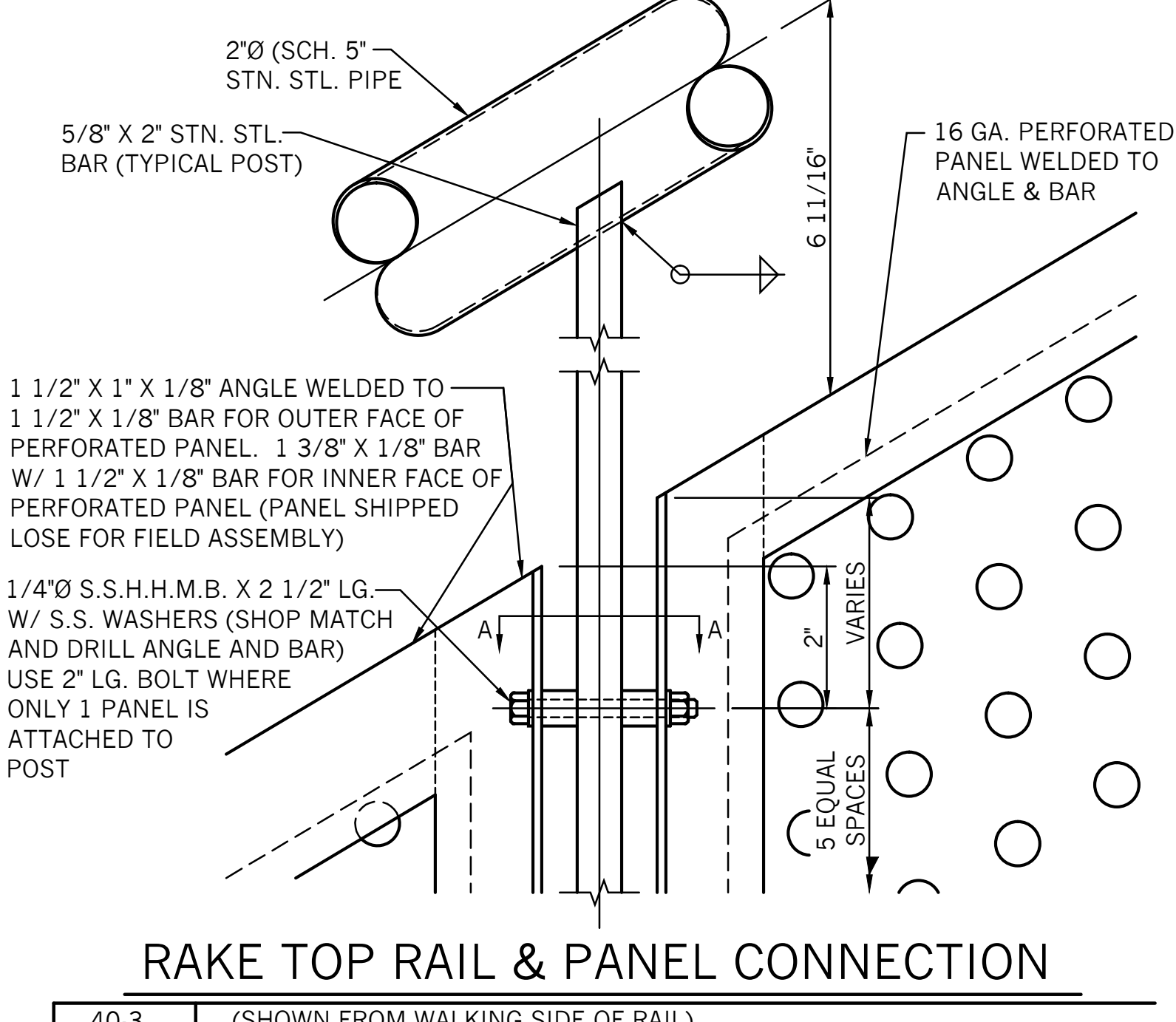
THIS DRAWING IS TABCO'S INTERPRETATION OF THE ENGINEER/ARCHITECT'S DESIGN INTENT. ANY CODE NONCOMPLIANCE IS THE RESPONSIBILITY OF THE ENGINEER/ARCHITECT.



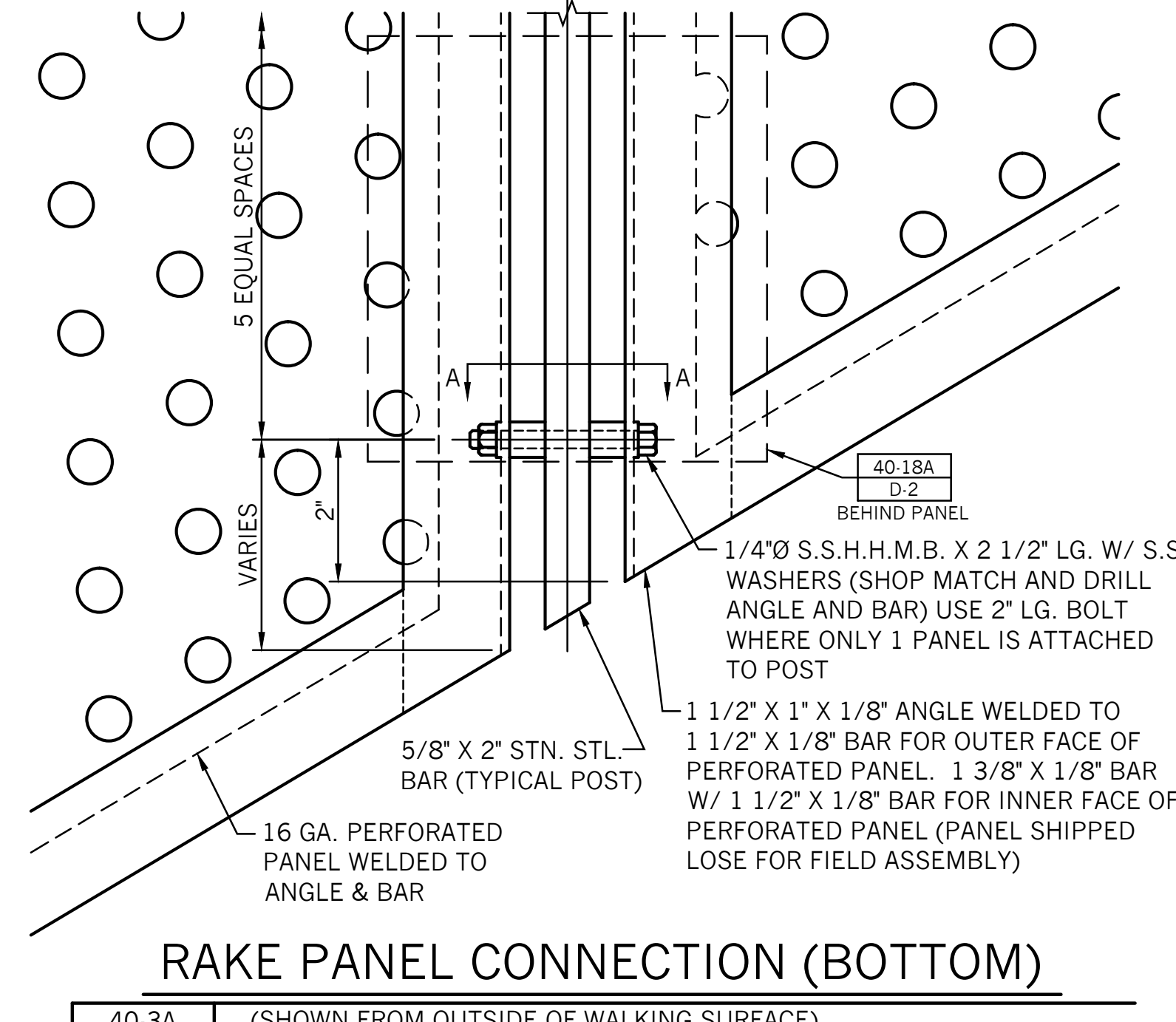
SECTION A-D-1



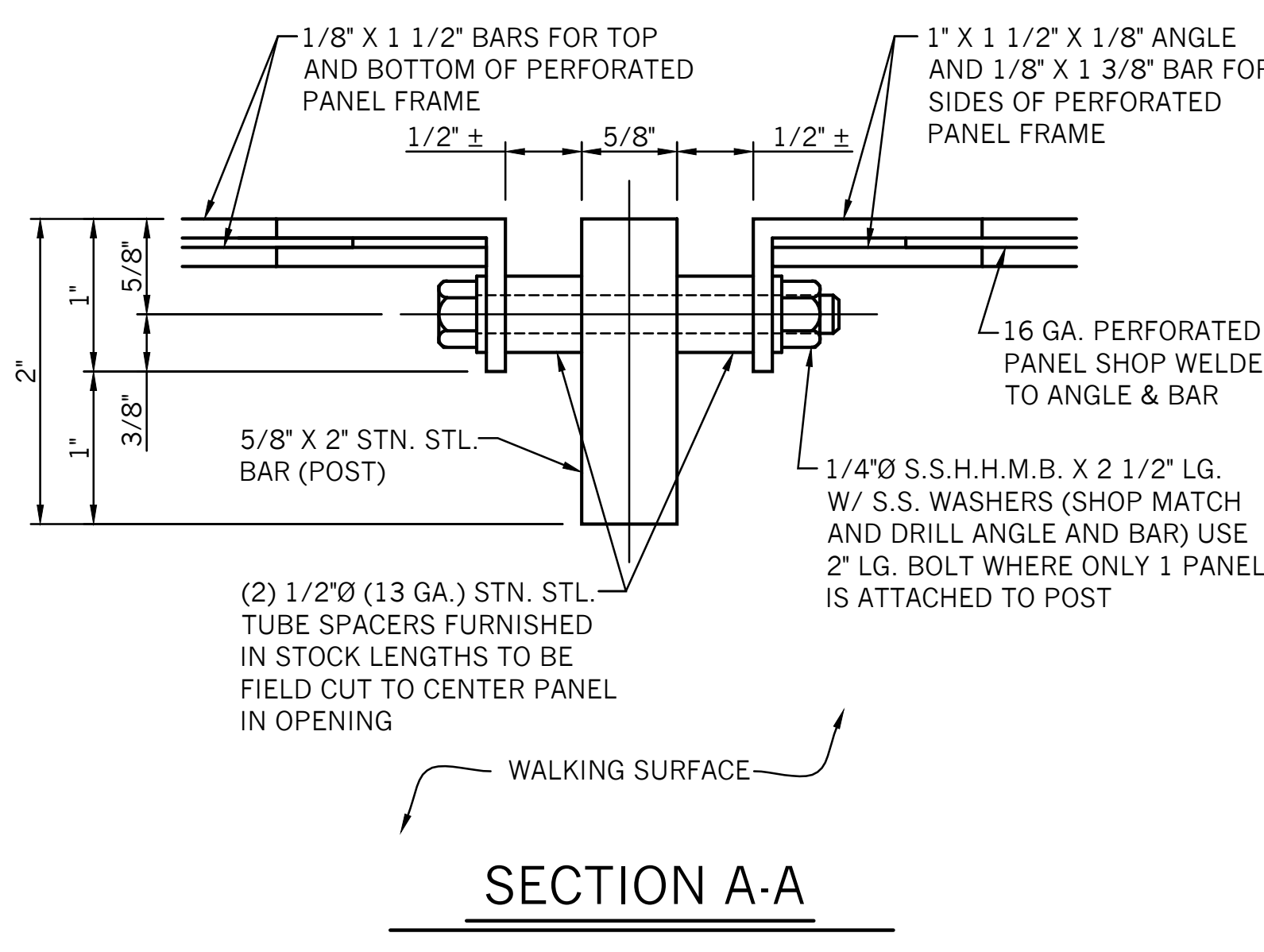
LEVEL TOP RAIL & PANEL CONNECTION  
40-2 (SHOWN FROM WALKING SIDE OF RAIL)



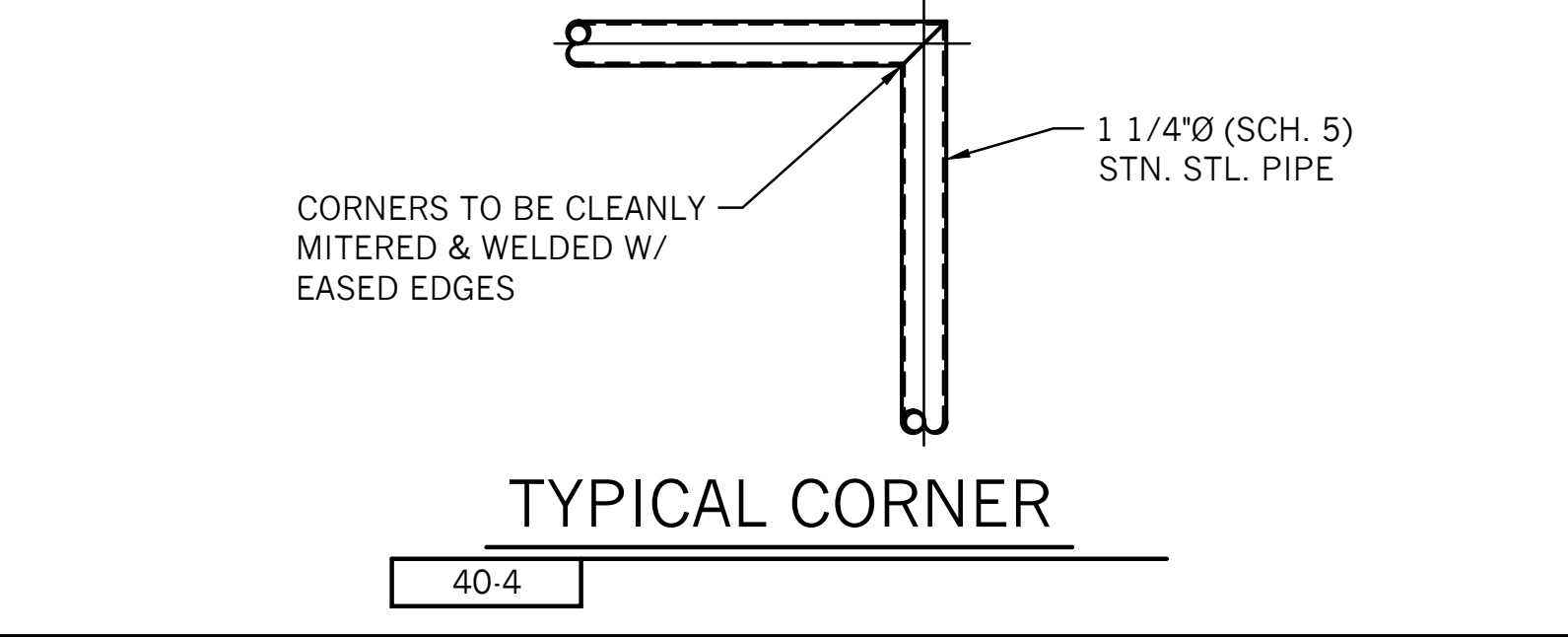
RAKE TOP RAIL & PANEL CONNECTION  
40-3 (SHOWN FROM WALKING SIDE OF RAIL)



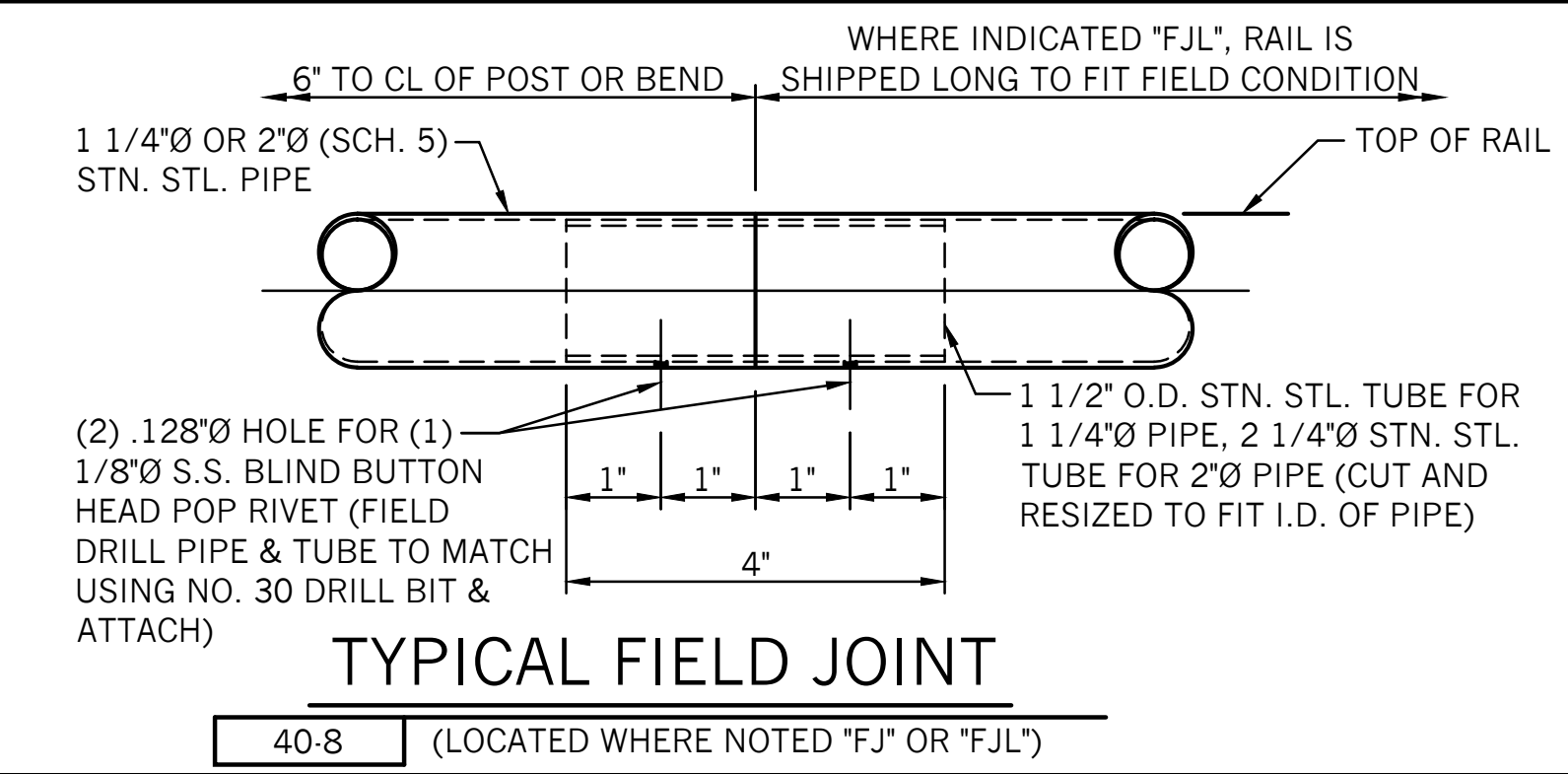
RAKE PANEL CONNECTION (BOTTOM)  
40-3A (SHOWN FROM OUTSIDE OF WALKING SURFACE)



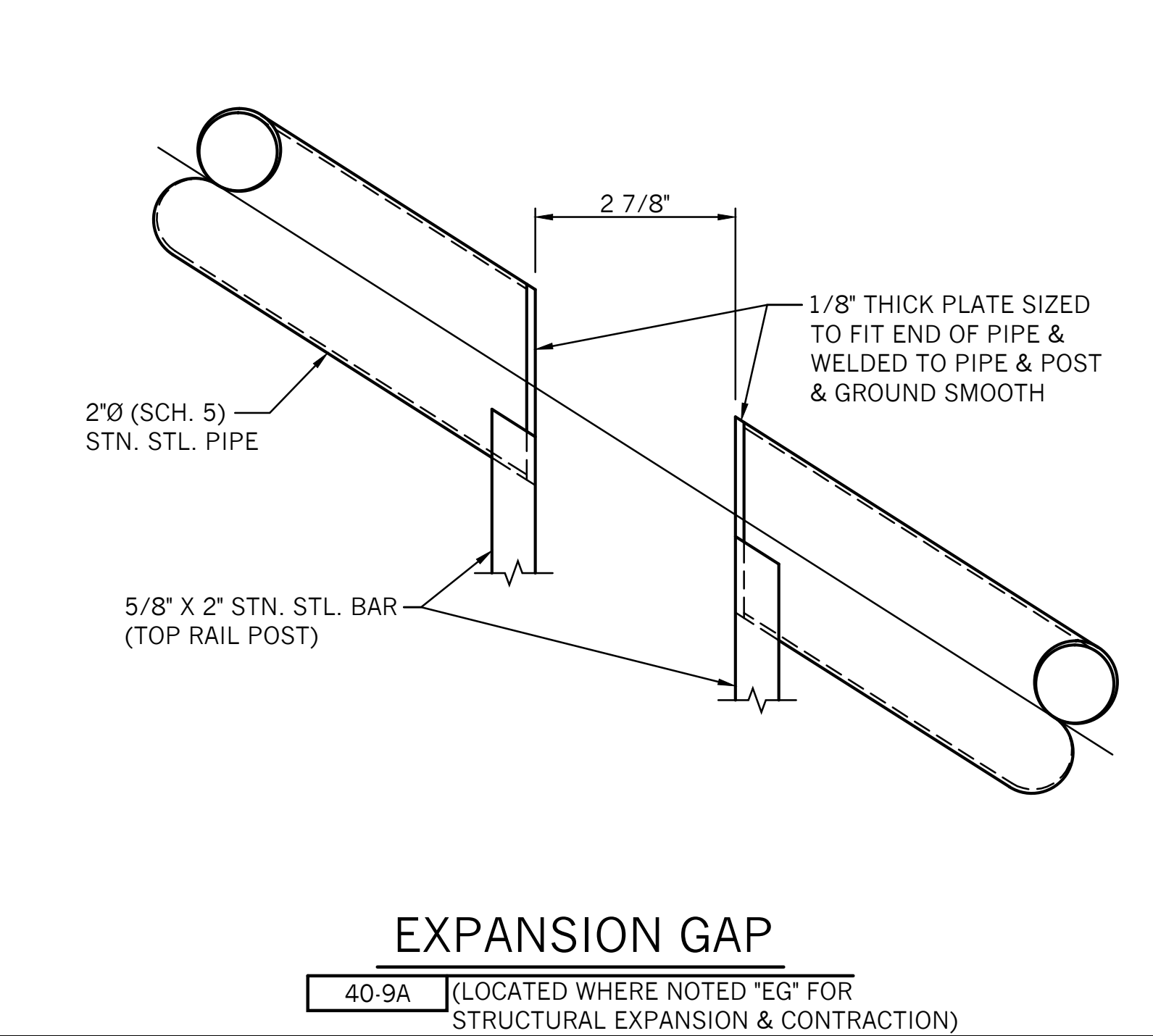
SECTION A-A



TYPICAL CORNER  
40-4

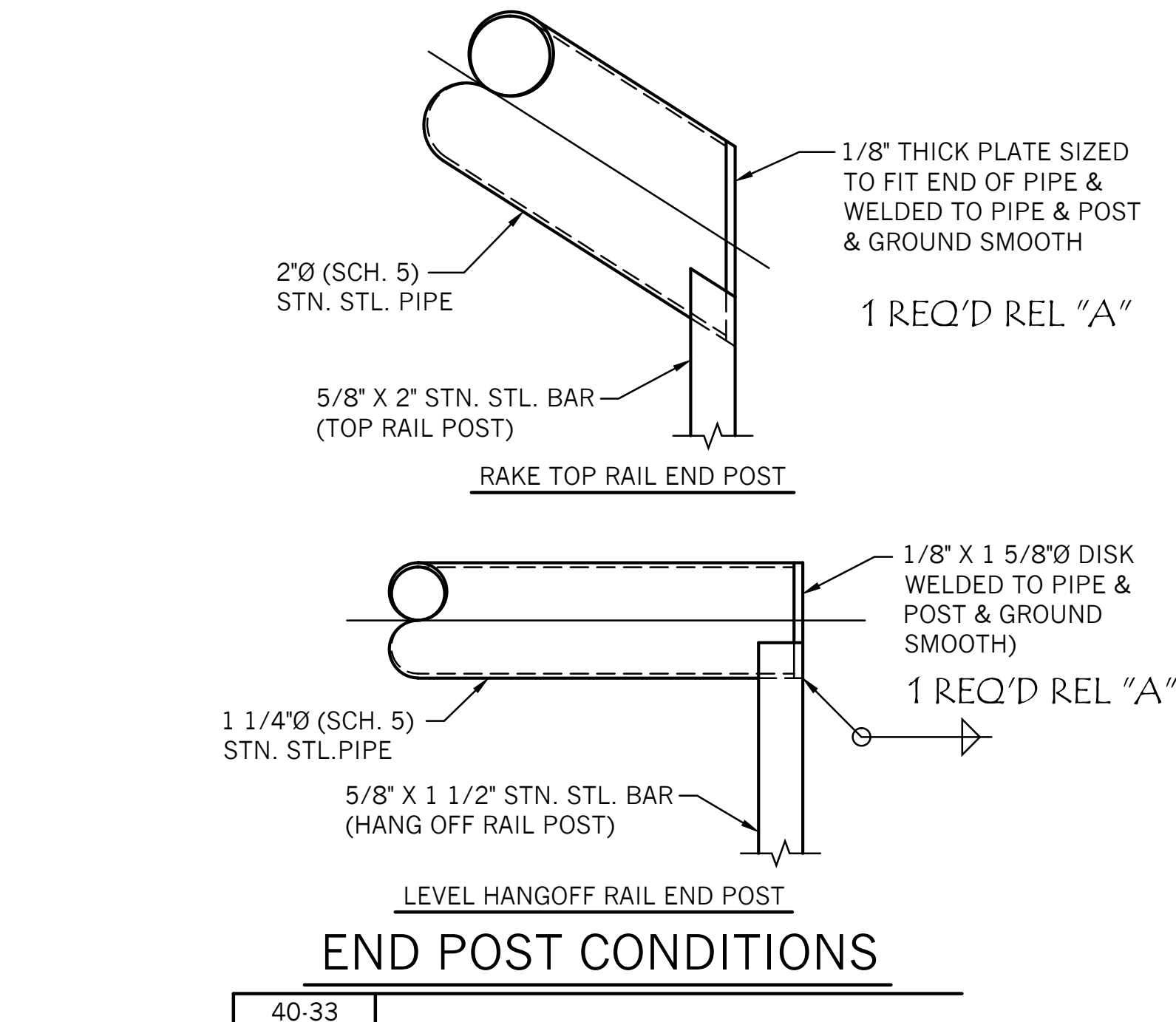


TYPICAL FIELD JOINT  
40-8 (LOCATED WHERE NOTED "FJ" OR "FJL")

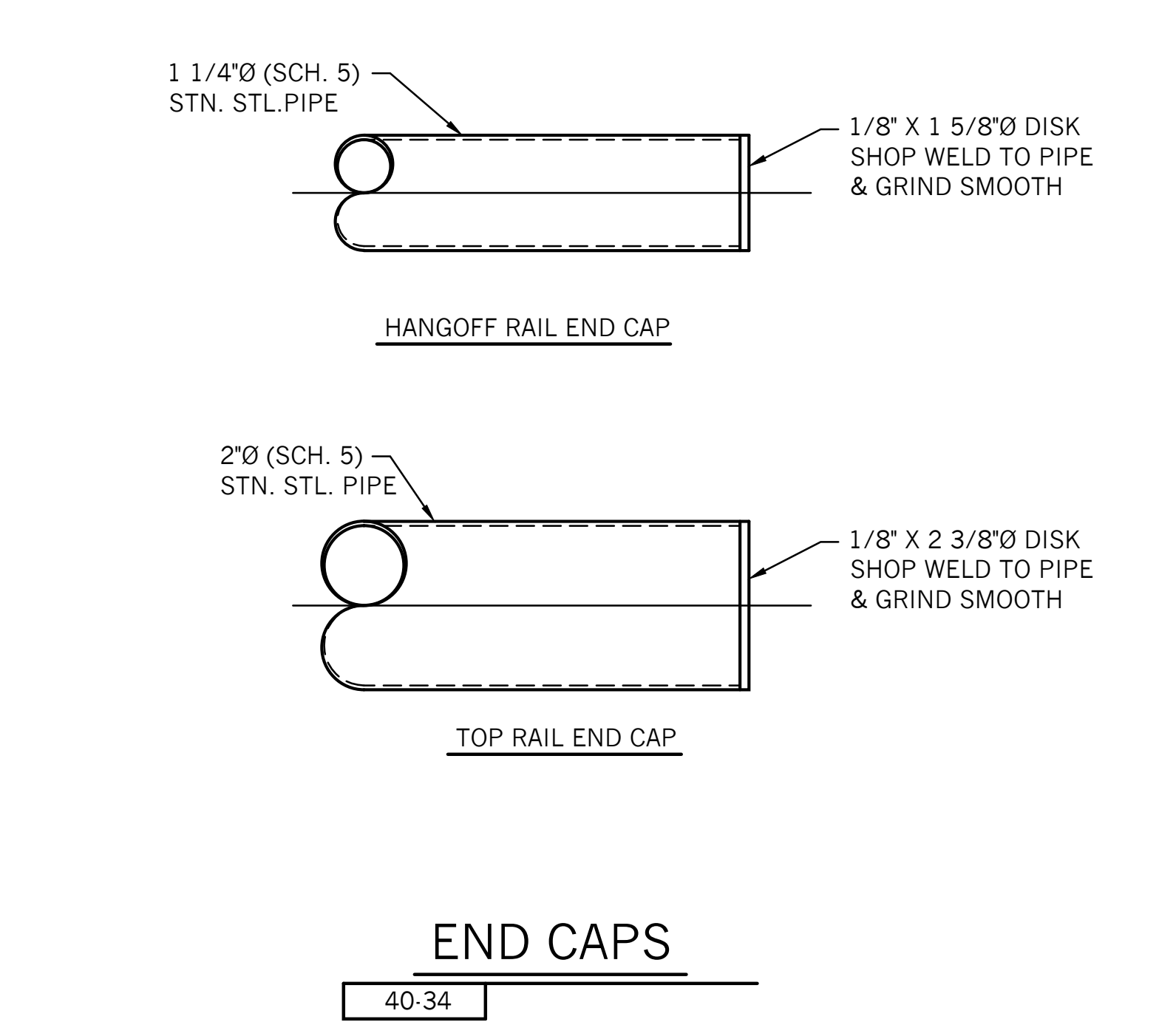


EXPANSION GAP  
40-9A (LOCATED WHERE NOTED "EG" FOR STRUCTURAL EXPANSION & CONTRACTION)

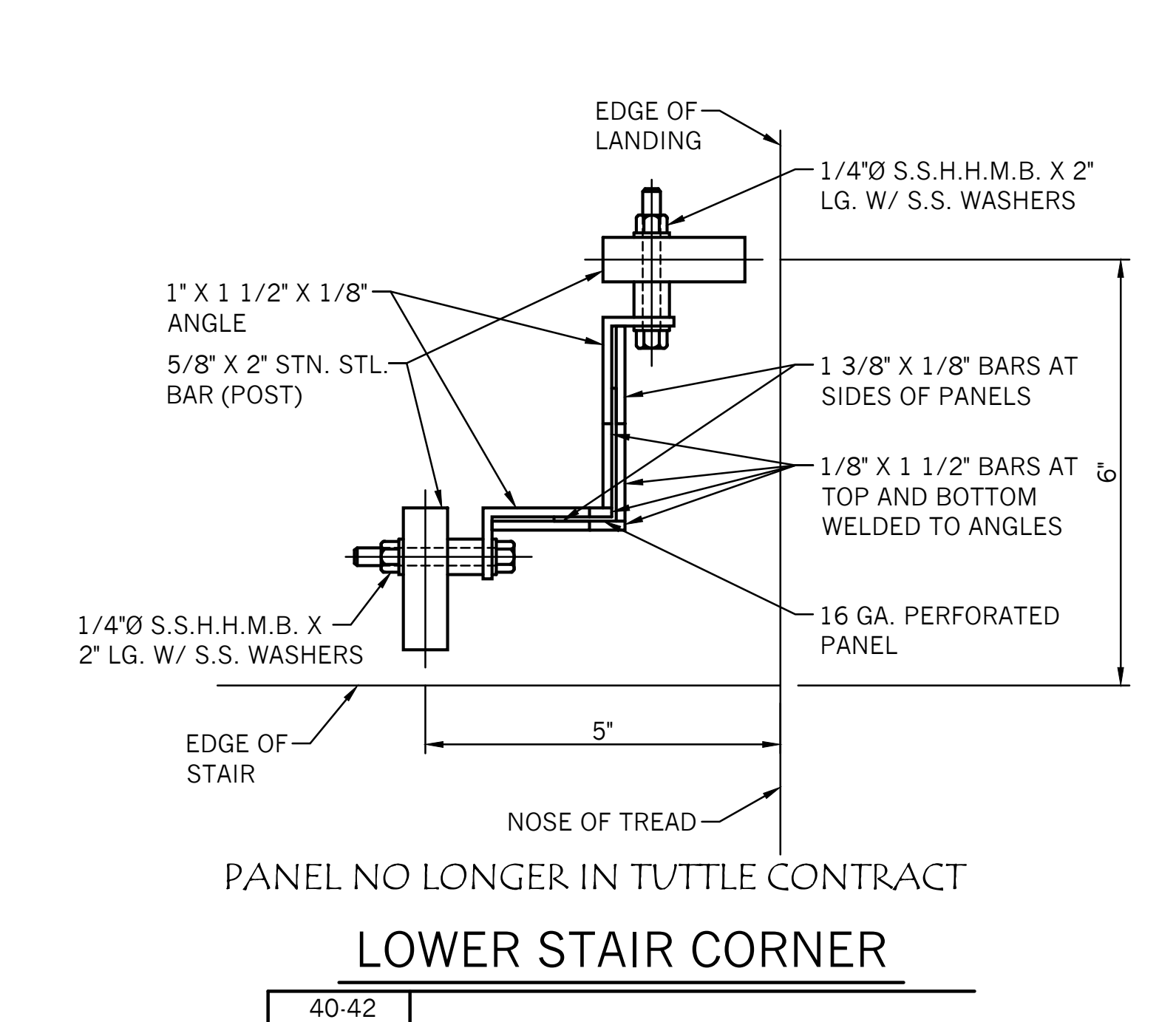
- GENERAL NOTES!**  
40-1
- 1) ALL RAIL TO BE OF WELDED CONSTRUCTION U.N.O.
  - 2) ALL TOP RAILS TO BE FABRICATED FROM 2"Ø (SCH. 5) STAINLESS STEEL PIPE (TYPE 304).
  - 3) ALL HANGOFF RAILS TO BE FABRICATED FROM 1 1/4"Ø (SCH. 5) STAINLESS STEEL PIPE (TYPE 304).
  - 4) POSTS TO BE FABRICATED FROM 5/8" X 2" STAINLESS STEEL BAR (TYPE 304) AT TOP RAILS. 5/8" X 1 1/2" STAINLESS STEEL BAR (TYPE 304) AT HANGOFF RAILS.
  - 5) ALL COMPONENTS TO BE TYPE 304.
  - 6) ALL FASTENERS (MACHINE BOLTS, EXPANSION ANCHORS, ETC.) TO BE STAINLESS STEEL. (TYPE 304)
  - 7) ALL BOLTS USED TO MOUNT RAILINGS TO FLOORS & WALLS ARE BY RAILING MFR.
  - 8) ALL RAILS WHEN PROPERLY INSTALLED SHALL MEET OR EXCEED OSHA REQUIREMENTS.
  - 9) MAX. POST SPACING TO BE 4'-0" C/C.
  - 10) ALL CURVED RAIL SHALL BE FABRICATED USING CURVED TOP, PANEL & HANGOFF RAILS.
  - 11) ALL RAIL IS TO RECEIVE A BRIGHT LONGITUDINAL (DIRECTIONAL) POLISH: NO. 4 (180 GRIT) FINISH.



END POST CONDITIONS  
40-33

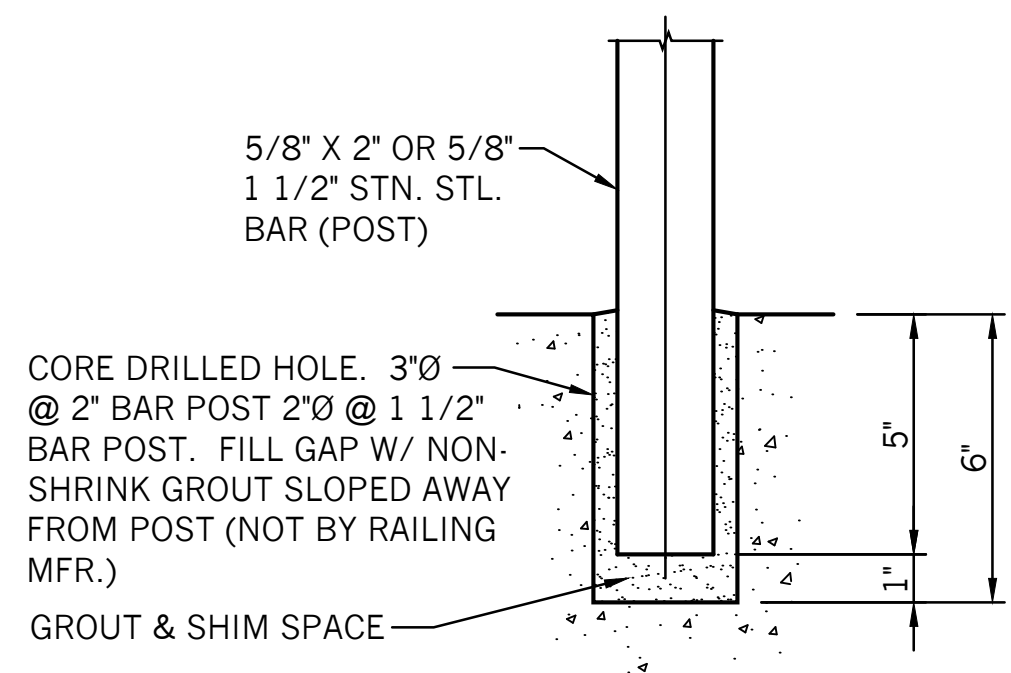


END CAPS  
40-34



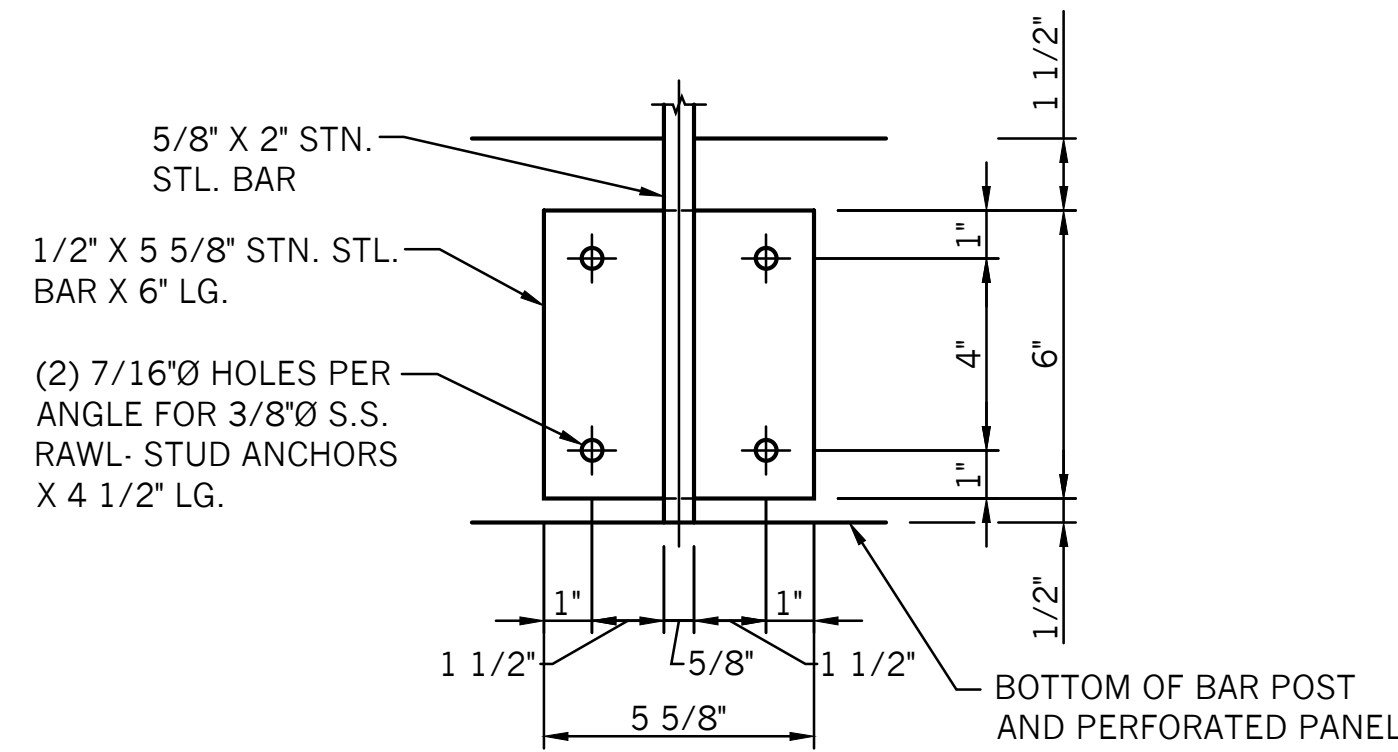
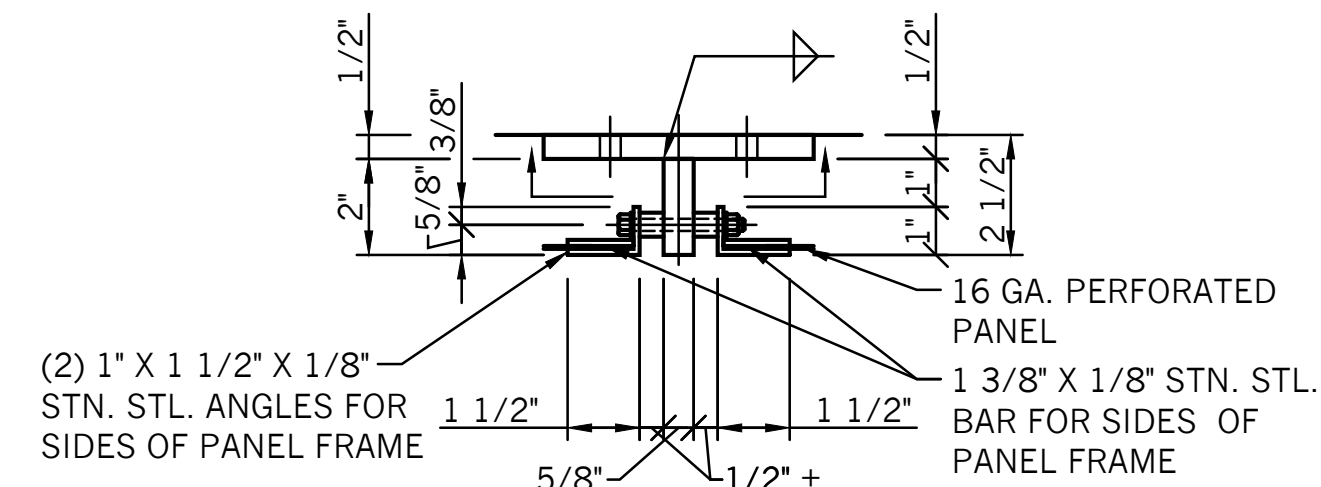
LOWER STAIR CORNER  
40-42

THESE DRAWINGS ARE THE PROPERTY OF TUTTLE ALUMINUM & BRONZE, INC. FISHERS INDIANA AND SHALL NOT BE REPRODUCED OR COPIED OR USED AS THE BASIS FOR THE MANUFACTURE OR SALE OF ITEMS SHOWN WITHOUT PERMISSION.  
THIS DRAWING IS TABCO'S INTERPRETATION OF THE ENGINEER'S/ARCHITECT'S DESIGN INTENT. ANY CODE NONCOMPLIANCE IS THE RESPONSIBILITY OF THE ENGINEER/ARCHITECTS.



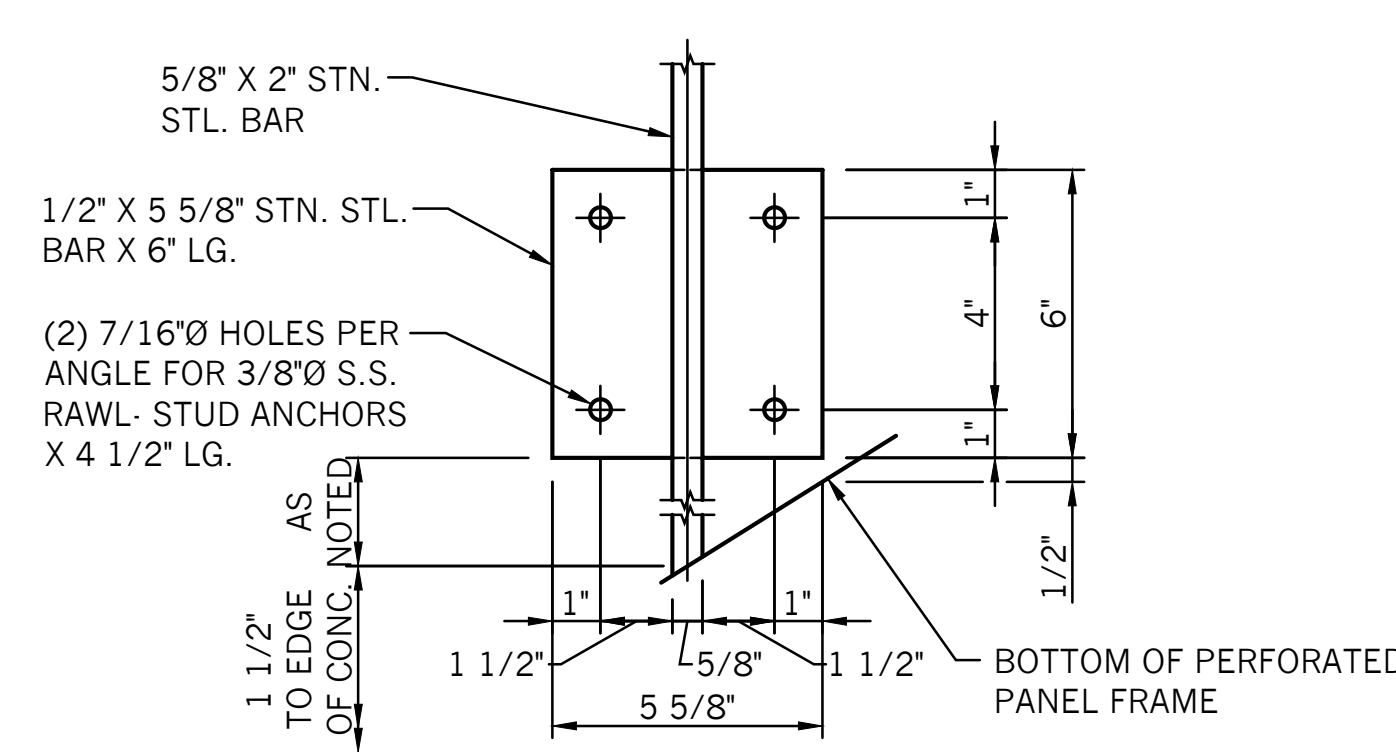
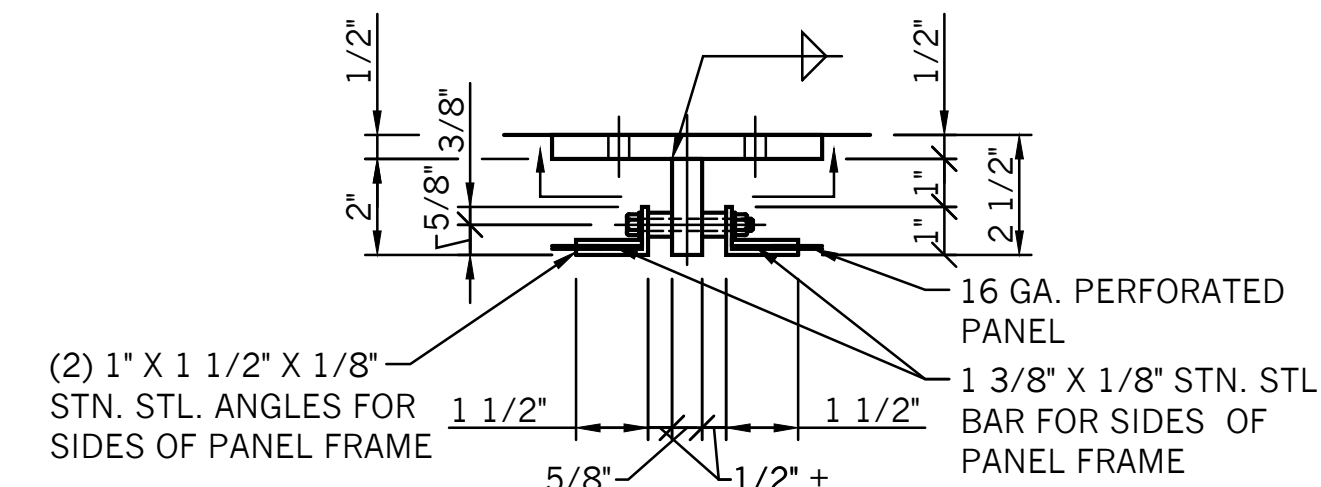
**EMBED POST**

40-29



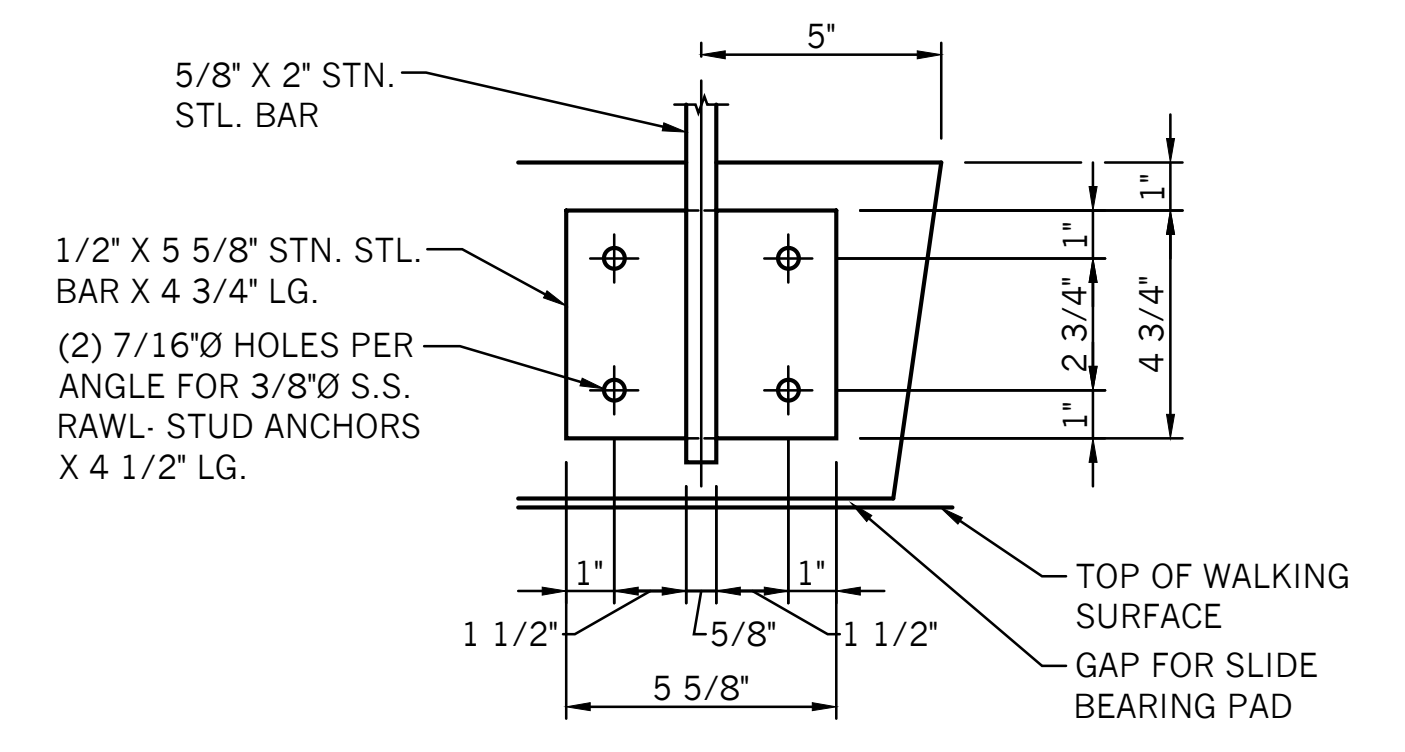
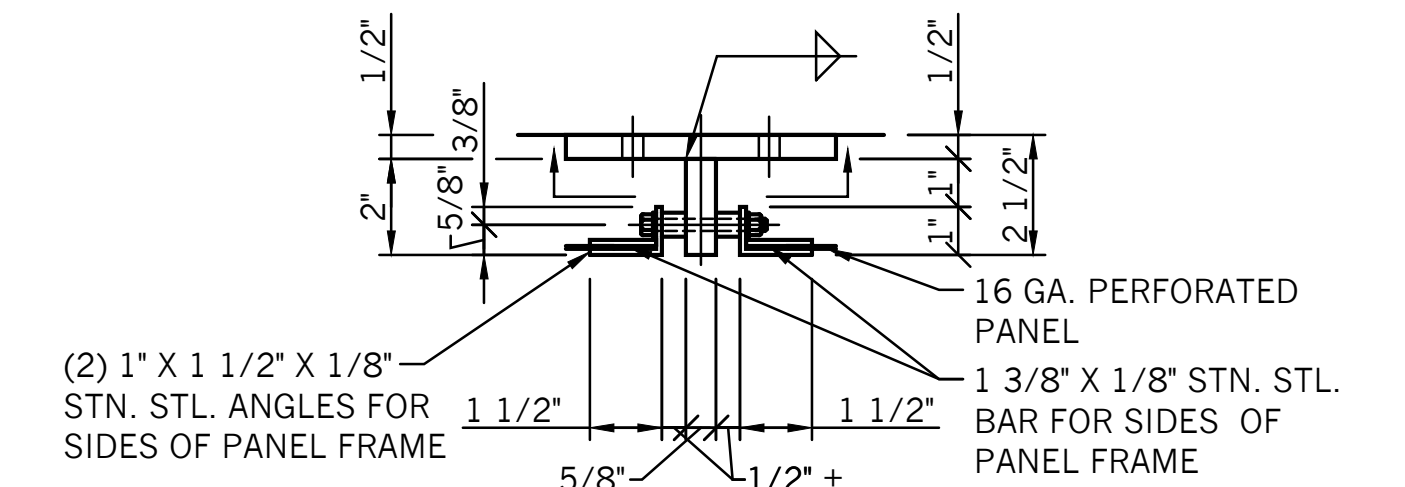
**CONC. SIDE MOUNT (LEVEL)**

40-18



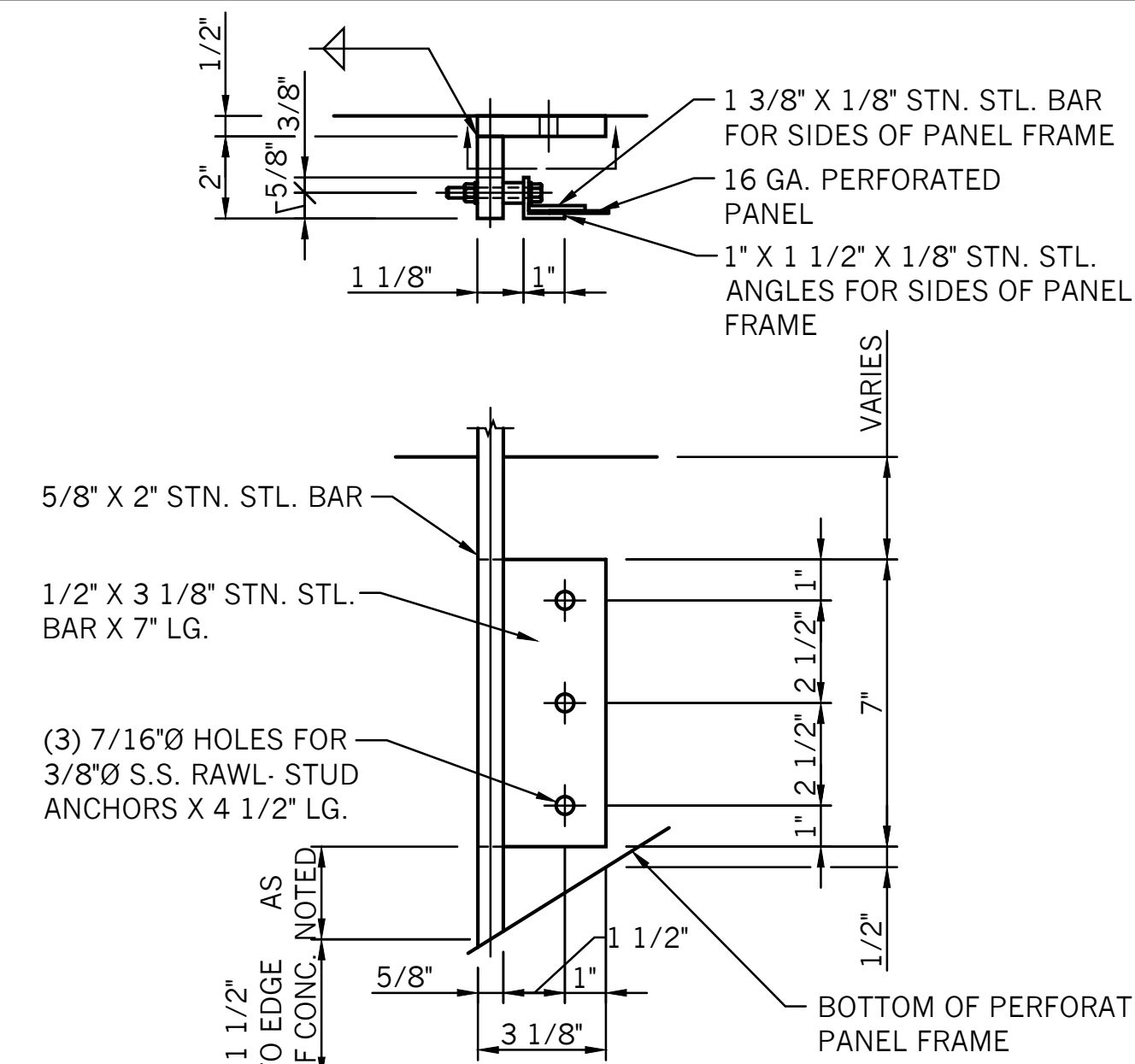
**CONC. SIDE MOUNT (RAKE)**

40-18A



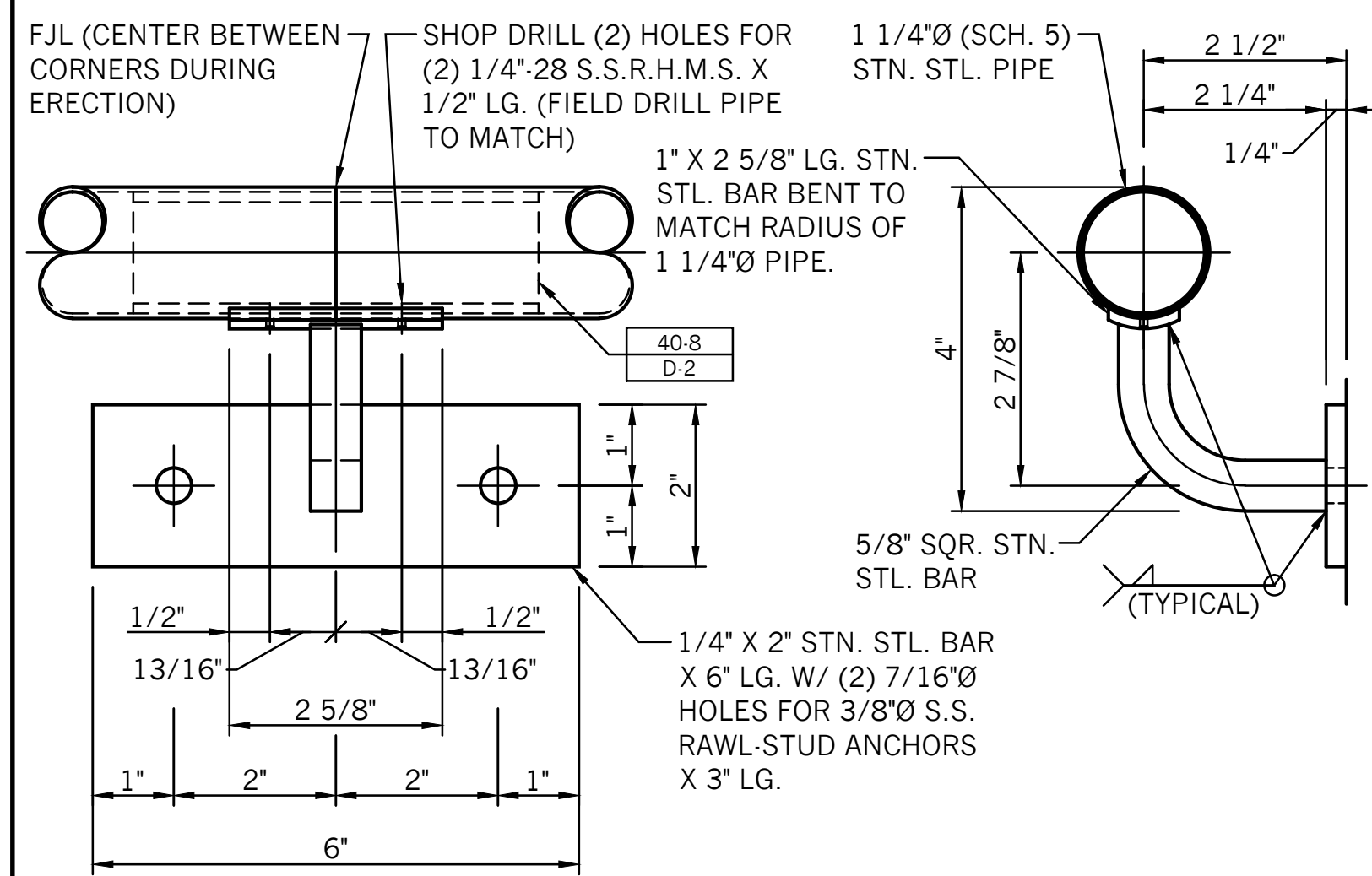
**CONC. SIDE MOUNT (BOTTOM TREAD)**

40-18B



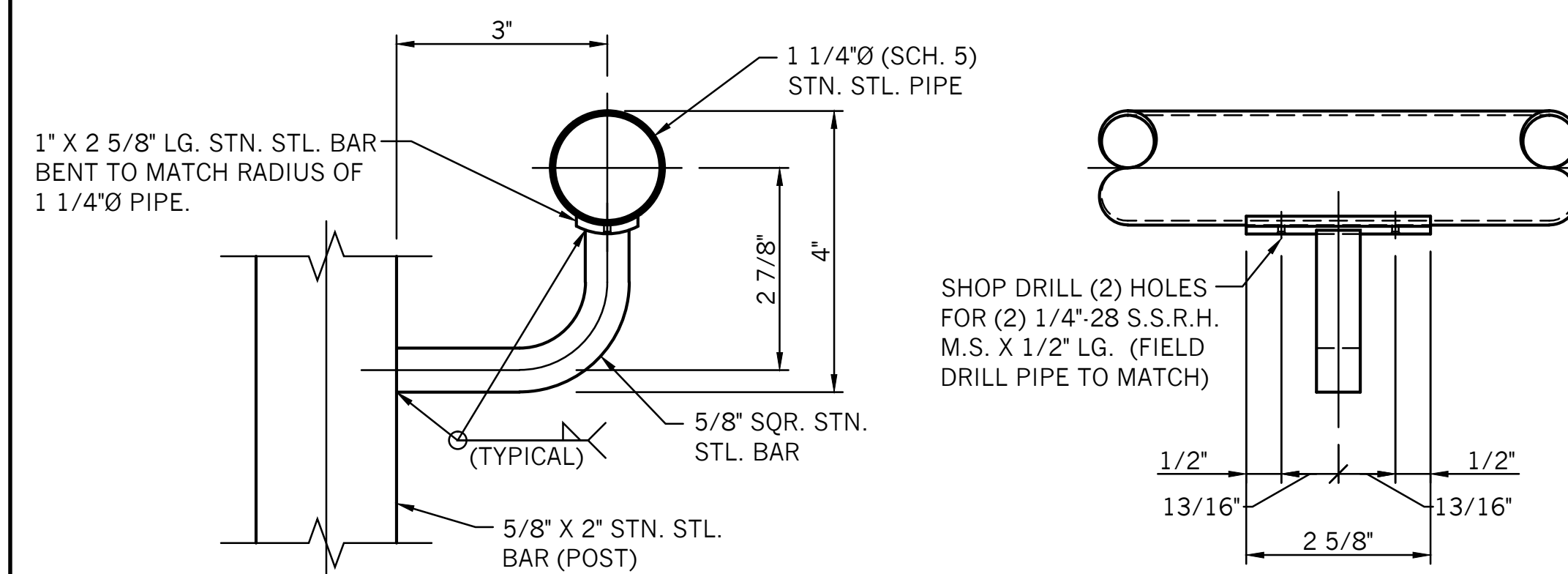
**OFFSET CONC. SIDE MOUNT**

40-22A REQUIRED WHERE NORMAL SIDE MOUNT BRACKET EXPANSION ANCHORS ARE TO CLOSE TO EDGE OF CONCRETE.



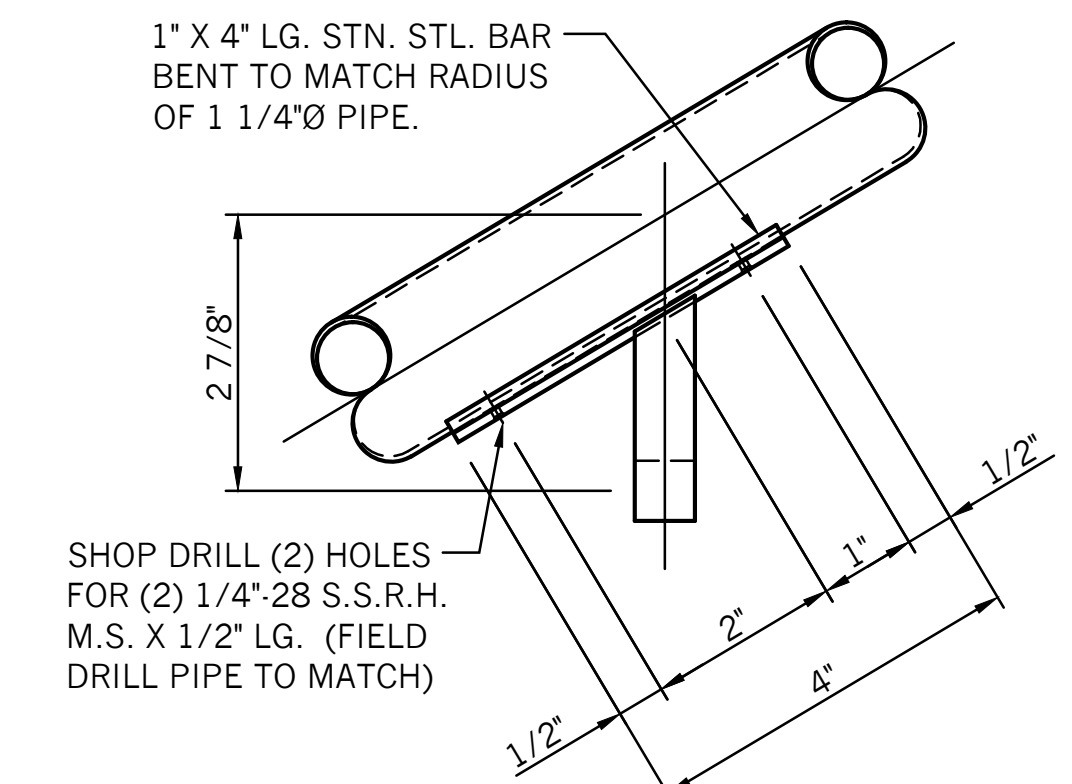
**WALL BRACKET**

40-35

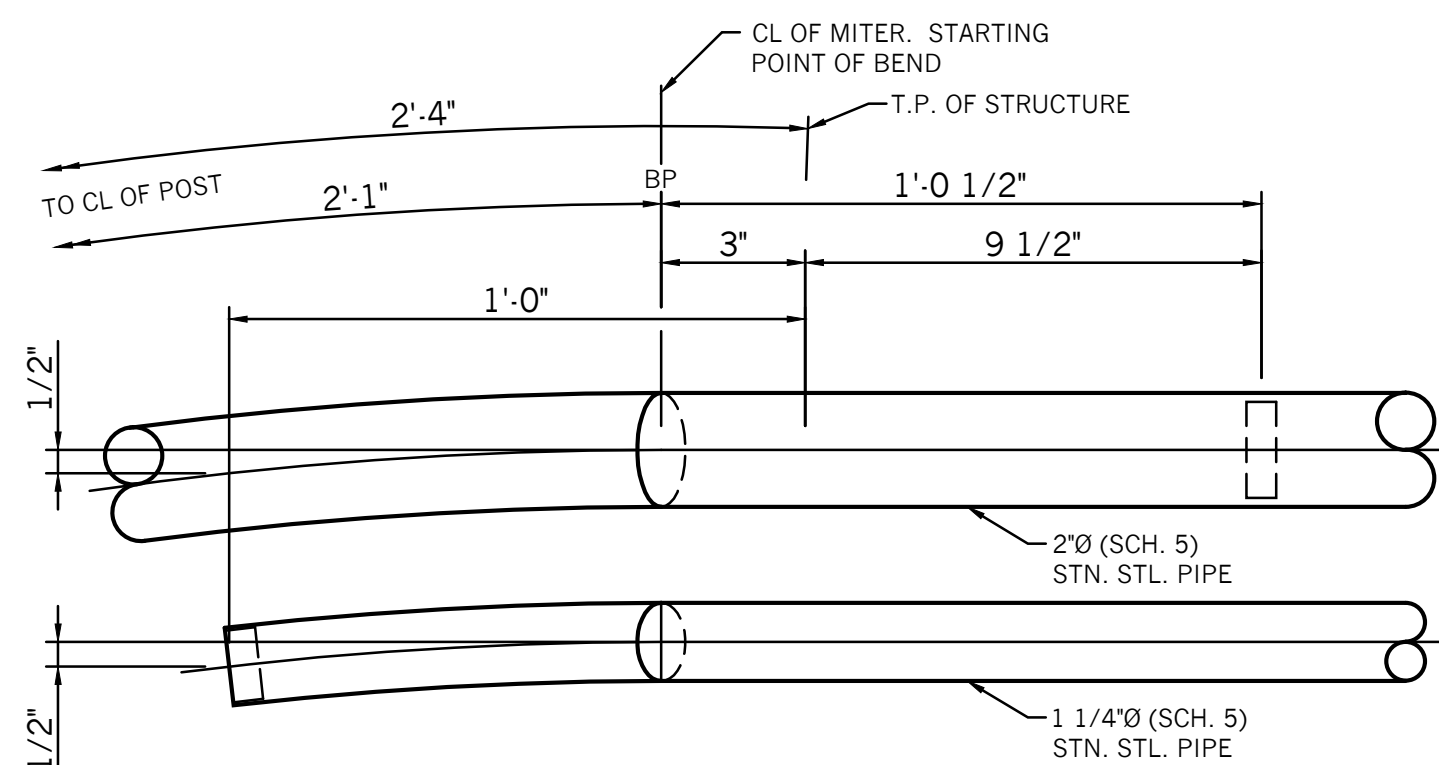


**HANGOFF RAIL CONNECTIONS**

40-35B



**RAKE HANGOFF RAIL**



**SHOP DETAIL**

X