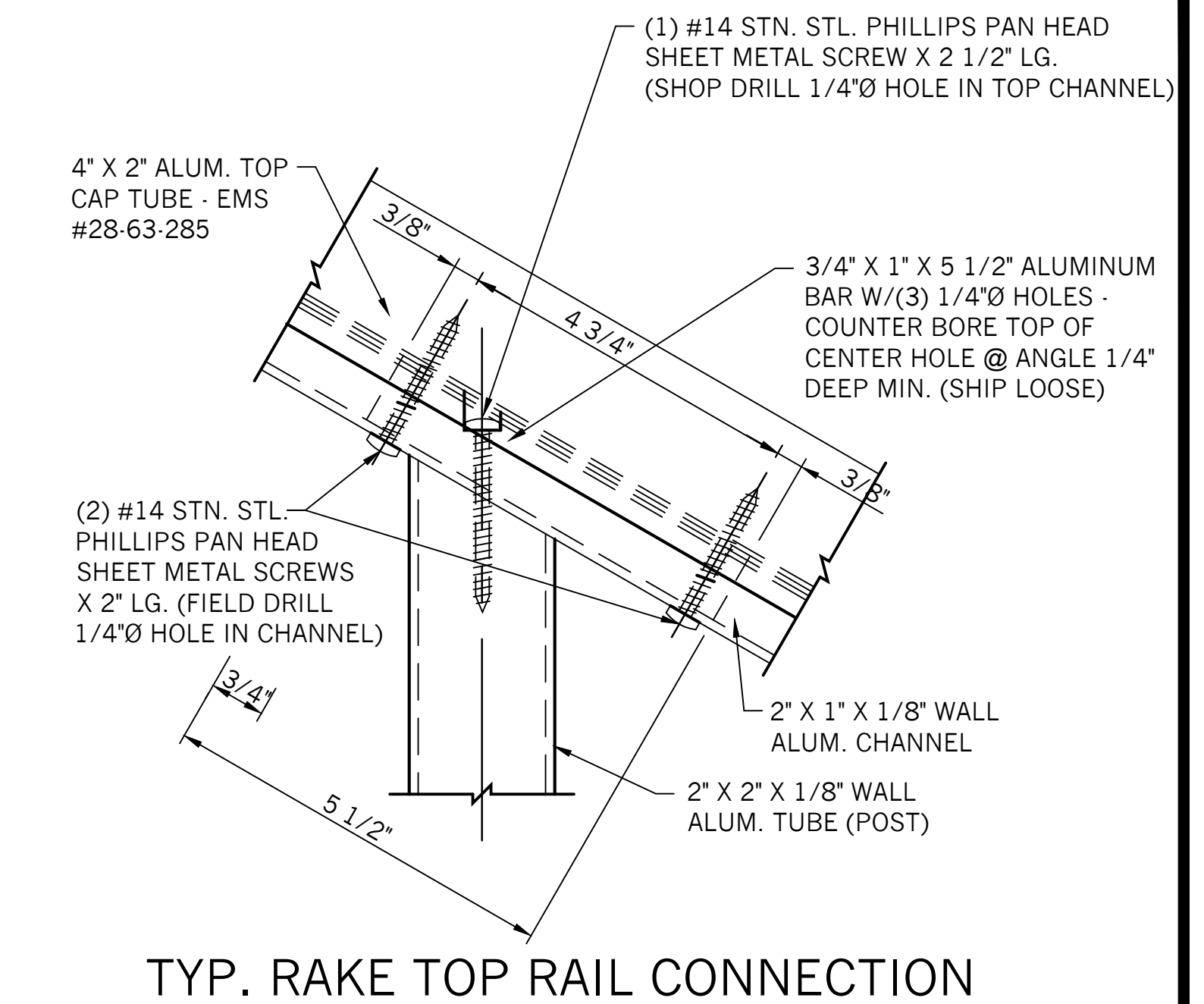
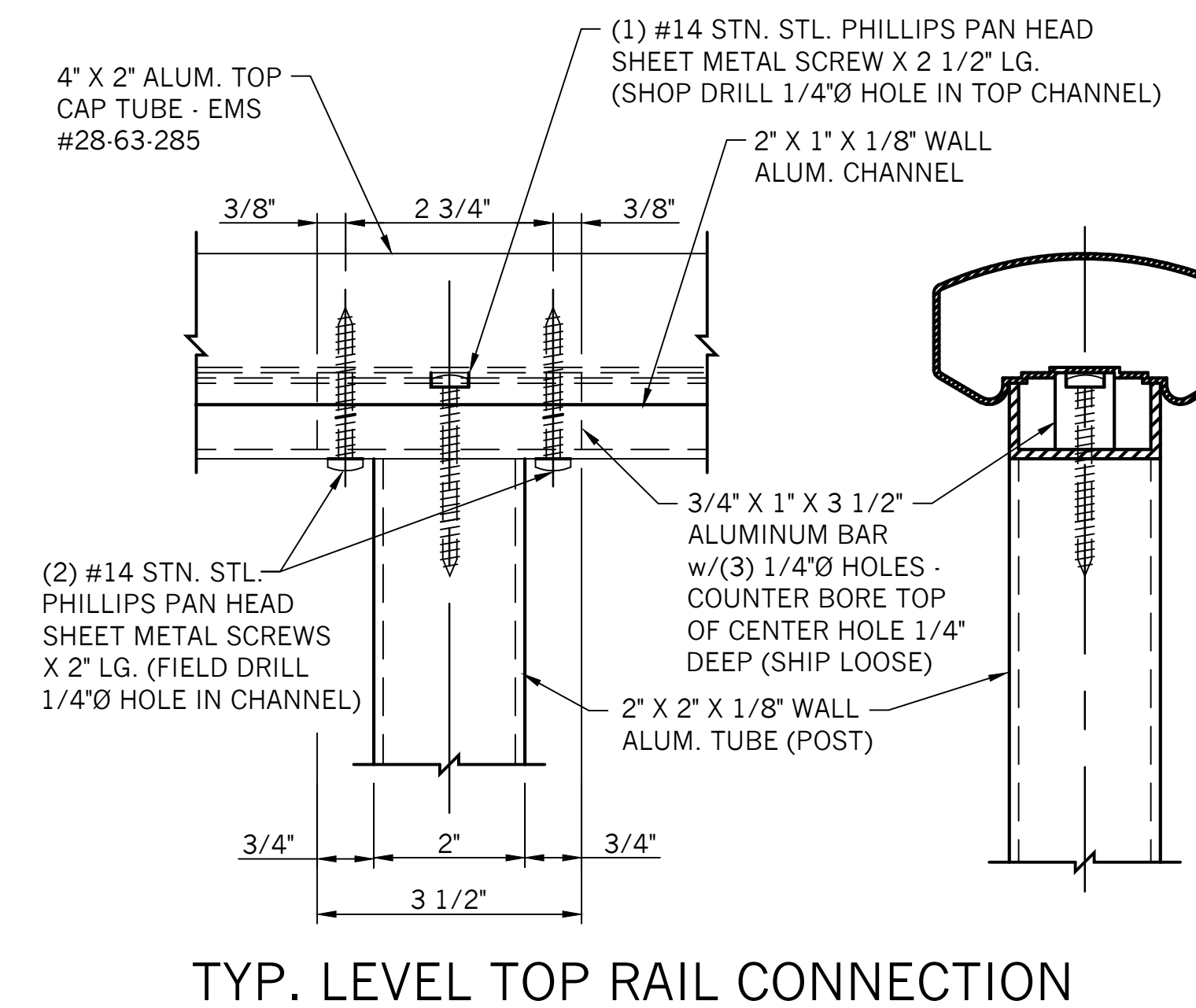
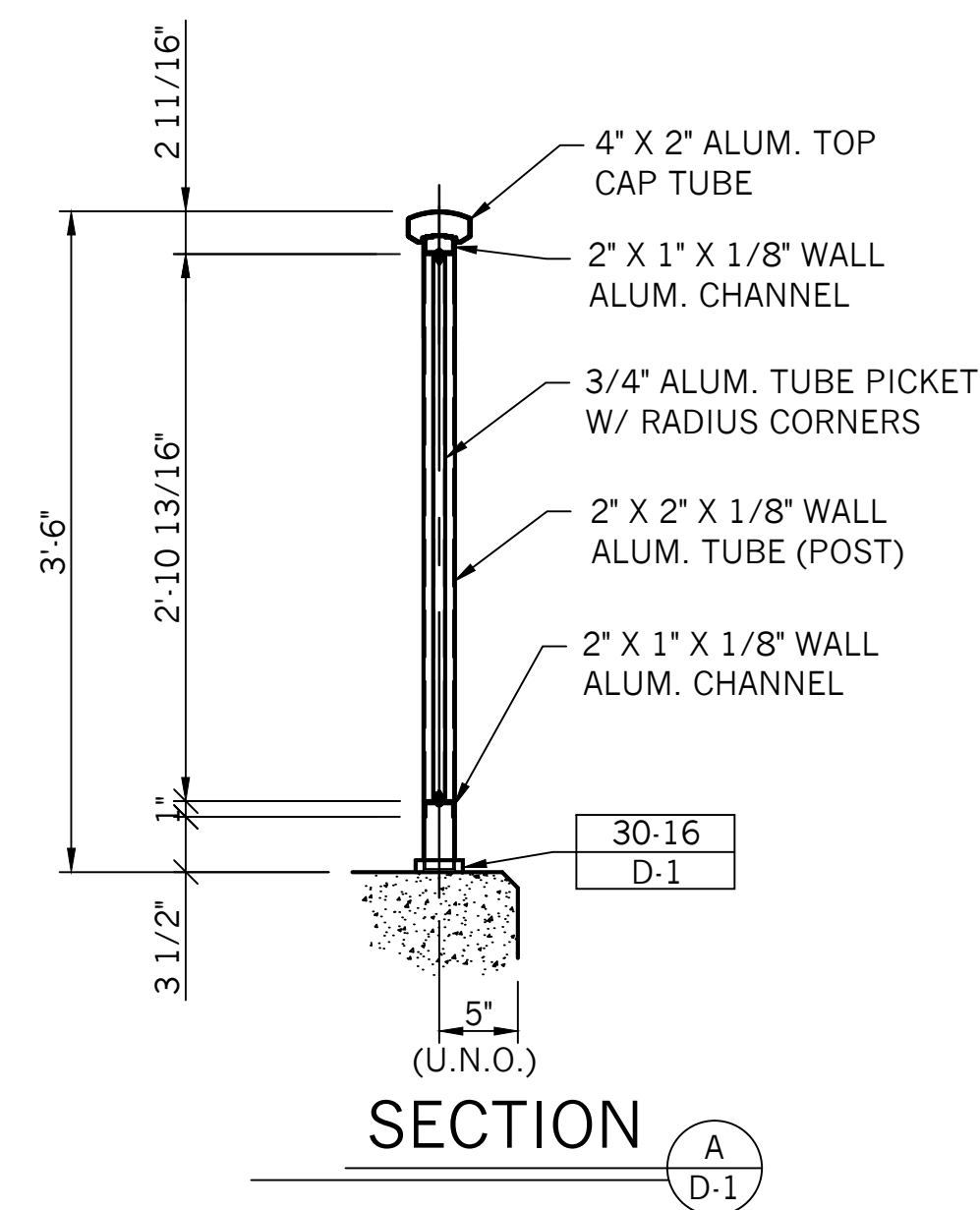
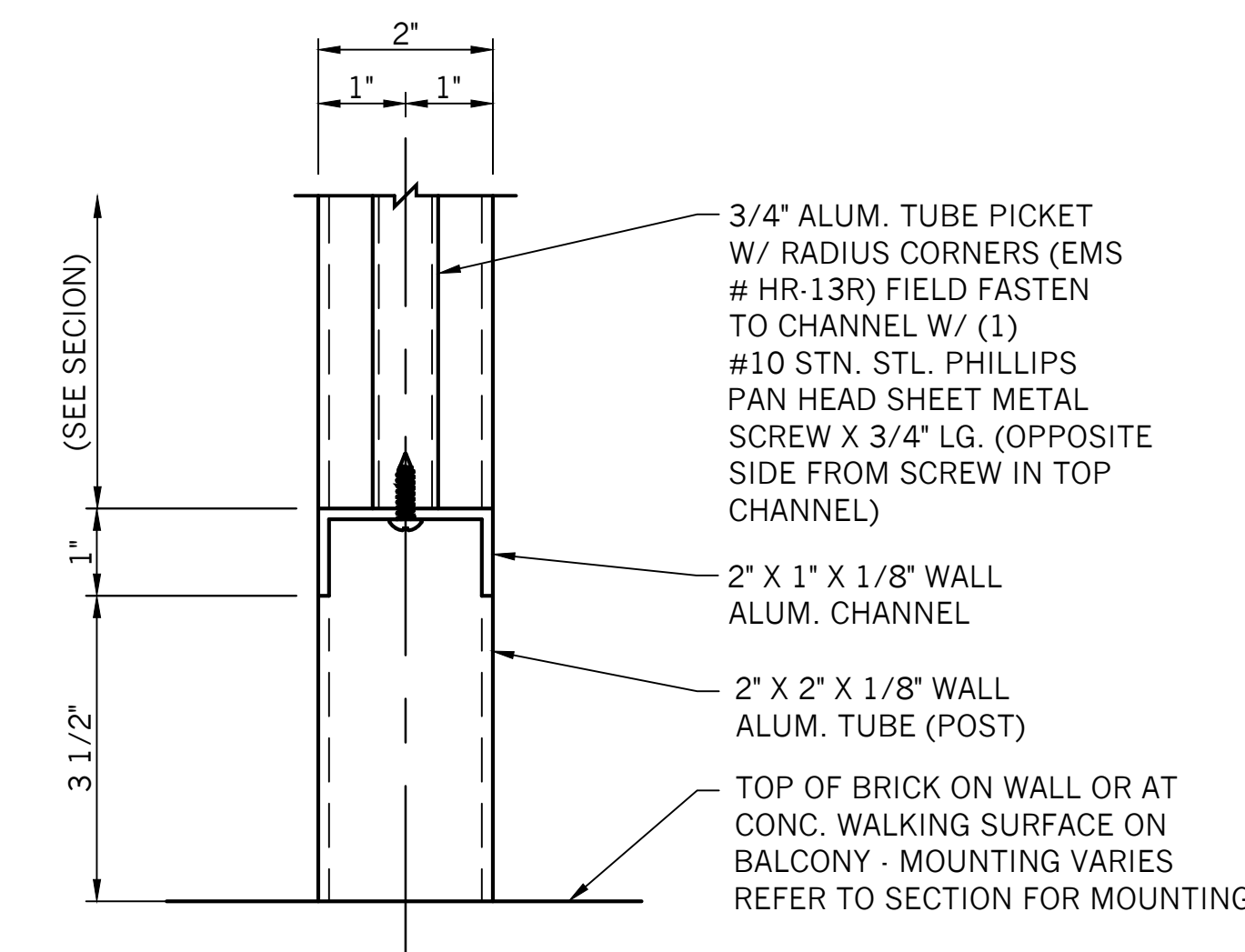


THESE DRAWINGS ARE THE PROPERTY OF TUTTLE RAILING SYSTEMS, FISHERS, INDIANA AND SHALL NOT BE REPRODUCED OR COPIED OR USED AS THE BASIS FOR THE MANUFACTURE OR SALE OF ITEMS SHOWN WITHOUT PERMISSION.  
THIS DRAWING IS TABCO'S INTERPRETATION OF THE ENGINEER'S/ARCHITECT'S DESIGN INTENT. ANY CODE NONCOMPLIANCE IS THE RESPONSIBILITY OF THE ENGINEER'S/ARCHITECTS.

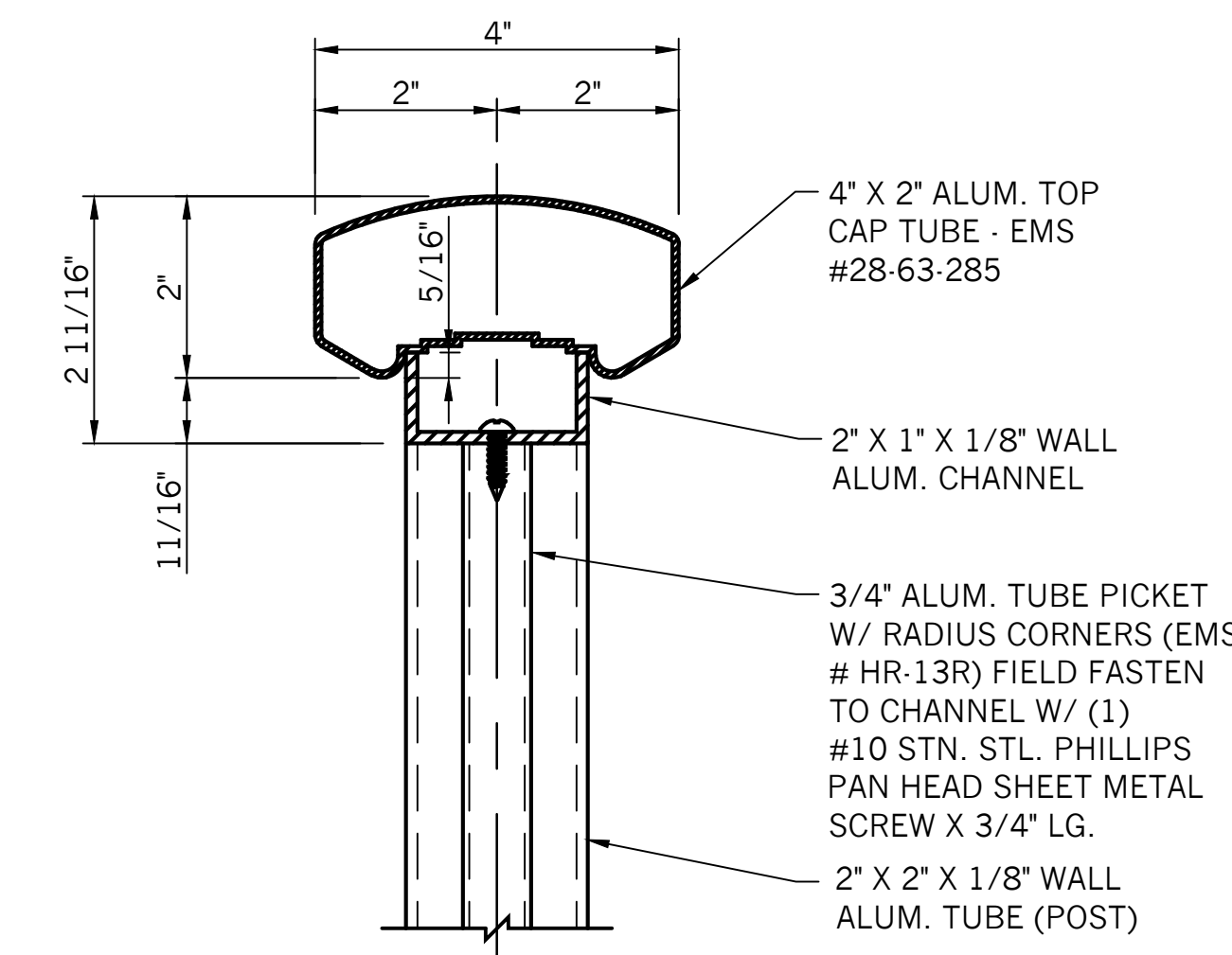


25-2

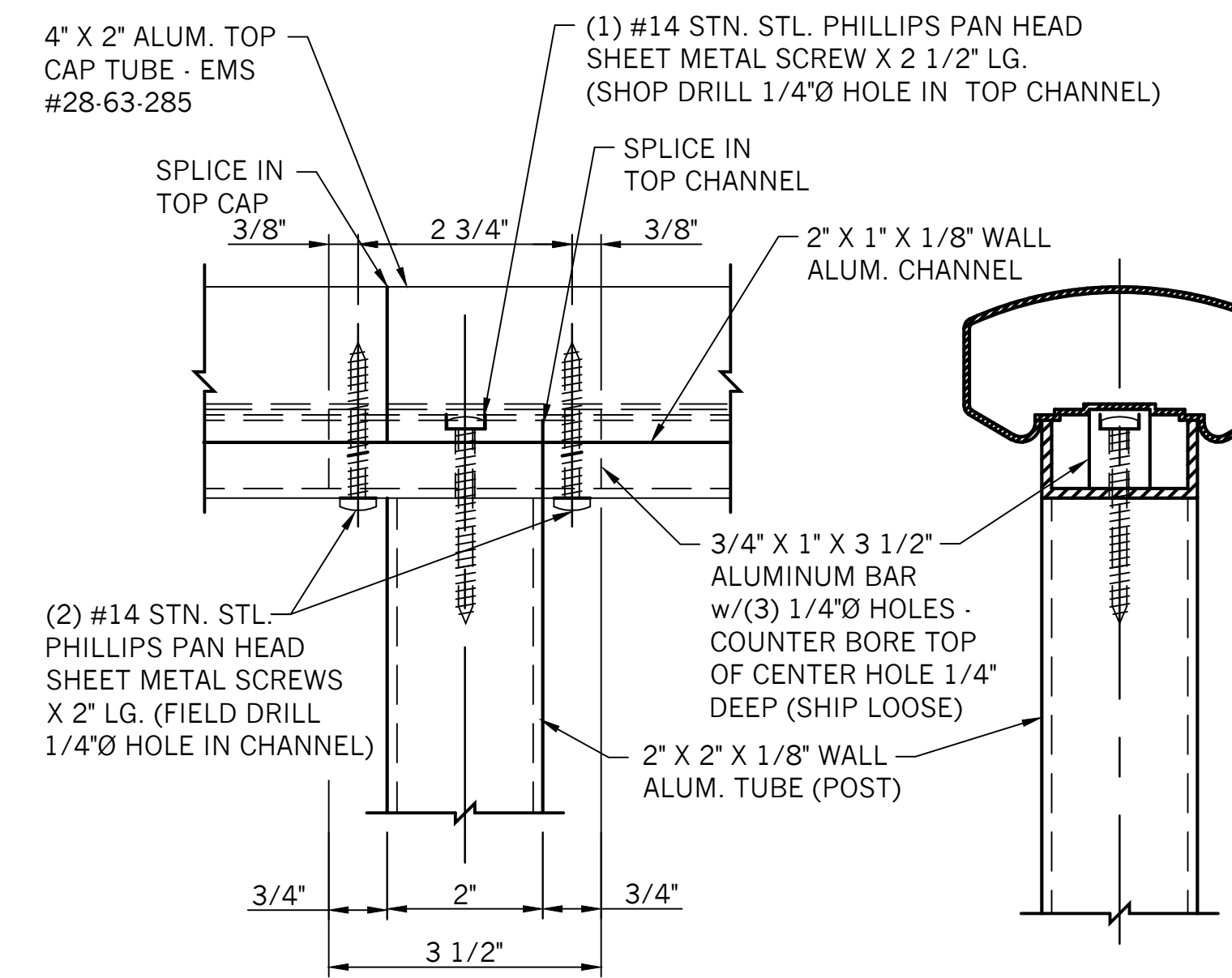
25-3



25-2A



25-41



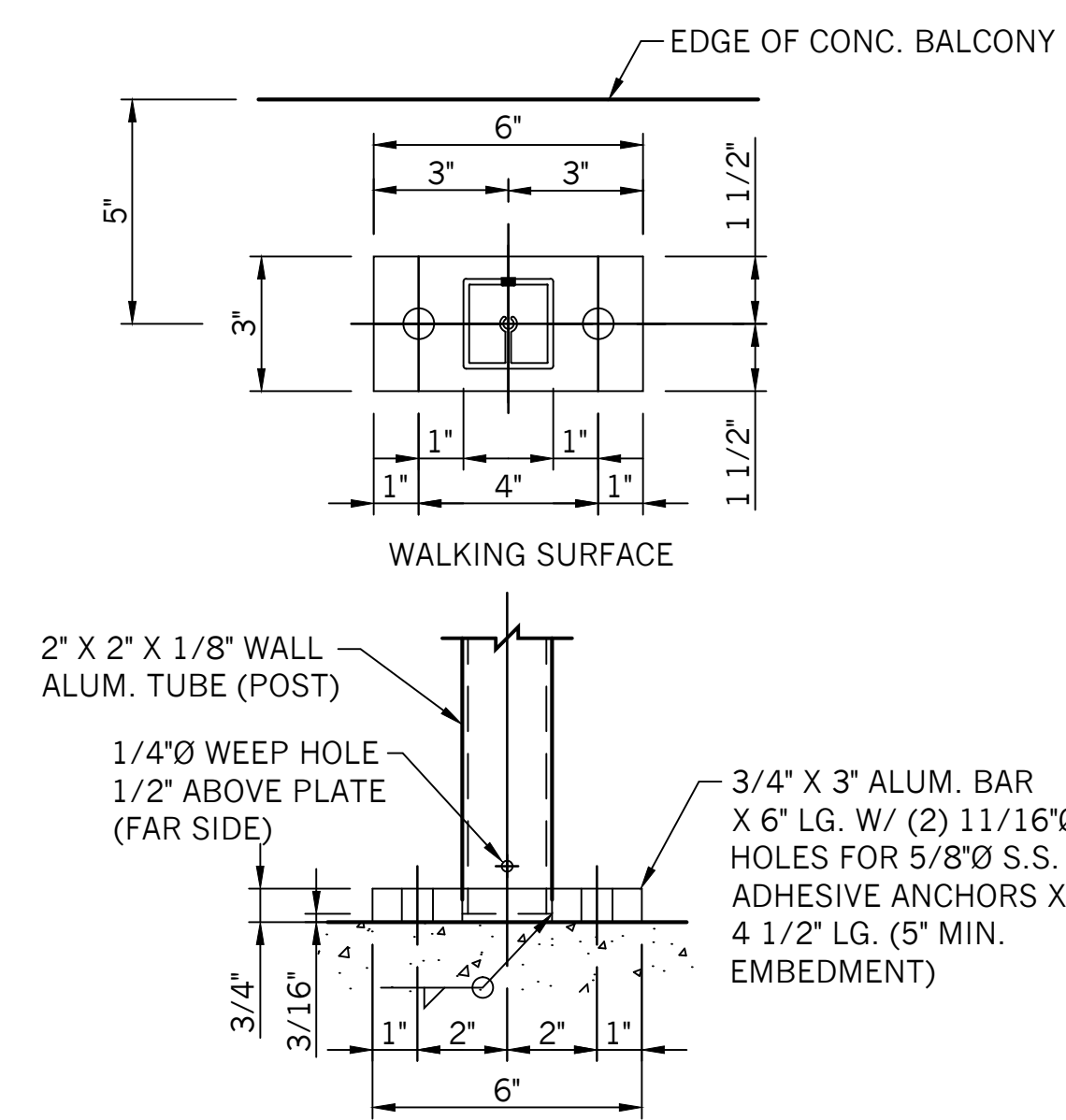
25-8

(LOCATED ONLY WHERE NOTED)

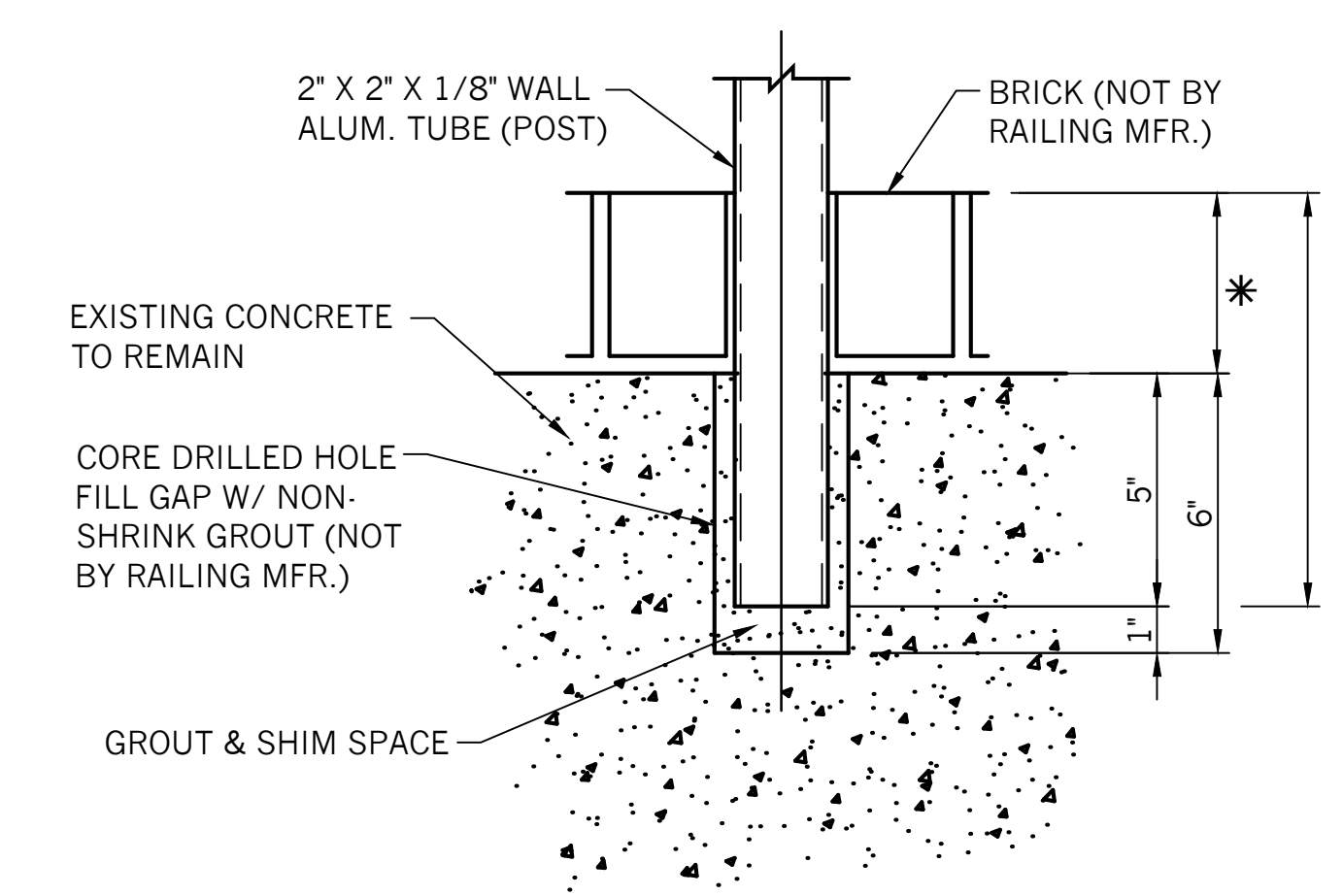
**GENERAL NOTES!**

25-1

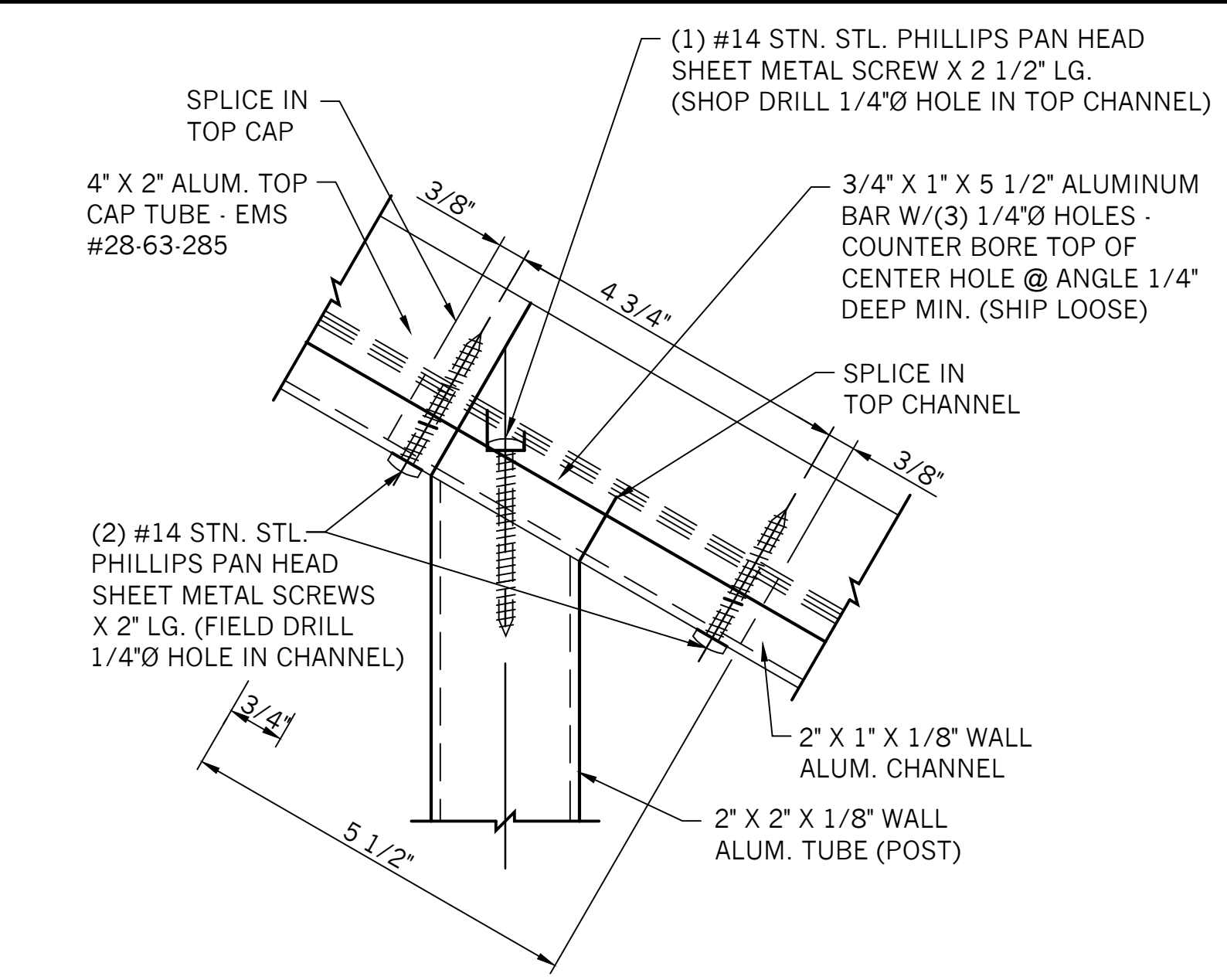
- 1) ALL RAIL TO BE OF MECHANICAL CONSTRUCTION U.N.O.
- 2) ALL TOP RAILS TO BE FABRICATED FROM 4" X 2" X .080 WALL ALUMINUM EXTRUSION (6063-T5 ALLOY).
- 3) ALL HANG-OFF RAILS TO BE FABRICATED FROM 1 1/2" (SCH. 40) ALUMINUM PIPE (6063-T6 ALLOY).
- 4) ALL BOTTOM RAILS TO BE FABRICATED FROM 2" X 1" X 1/8" ALUMINUM EXTRUSION (6063-T6 ALLOY).
- 5) ALL PICKETS TO BE FABRICATED FROM 3/4" X 3/4" X .??? WALL ALUMINUM EXTRUSION (6063-T6 ALLOY).
- 6) ALL POSTS TO BE FABRICATED FROM 2" X 2" X 1/8" ALUMINUM TUBE (6063-T6 ALLOY).
- 7) ALL COMPONENTS TO BE 6063-T6 ALLOY.
- 8) ALL FASTENERS (SELF TAPPING SCREWS, BLIND RIVETS, MACHINE BOLTS, ADHESIVE ANCHORS, ETC.) TO BE STAINLESS STEEL. (TYPE 304)
- 9) ALL RAILING SURFACES IN CONTACT WITH CONCRETE OR DISSIMILAR METALS SHALL RECEIVE ONE SHOP APPLIED COAT OF BITUMINOUS PAINT.
- 10) ALL BOLTS USED TO MOUNT RAILINGS TO FLOORS, WALLS, STEEL, ETC. ARE BY RAILING MFR.
- 11) ALL RAILS ARE FURNISHED IN ASSEMBLED 20'-0" LG. (MAX.) SECTIONS.
- 12) ALL RAILS WHEN PROPERLY INSTALLED SHALL MEET OR EXCEED OSHA REQUIREMENTS.
- 13) MAX. POST SPACING TO BE 5'-0" C/C.
- 14) ALL RAIL IS TO BE FINISHED WITH A POWDER COAT FINISH.
- 15) ALL DIMENSIONS MARKED THUS "\*" MUST BE FIELD MEASURED PRIOR TO FABRICATION. ANY BLANK DIMENSIONS WILL BE CALCULATED AFTER FIELD MEASUREMENTS ARE RECEIVED. (TYPICAL THROUGHOUT)



30-16



25-29

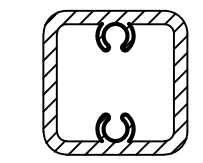


25-8

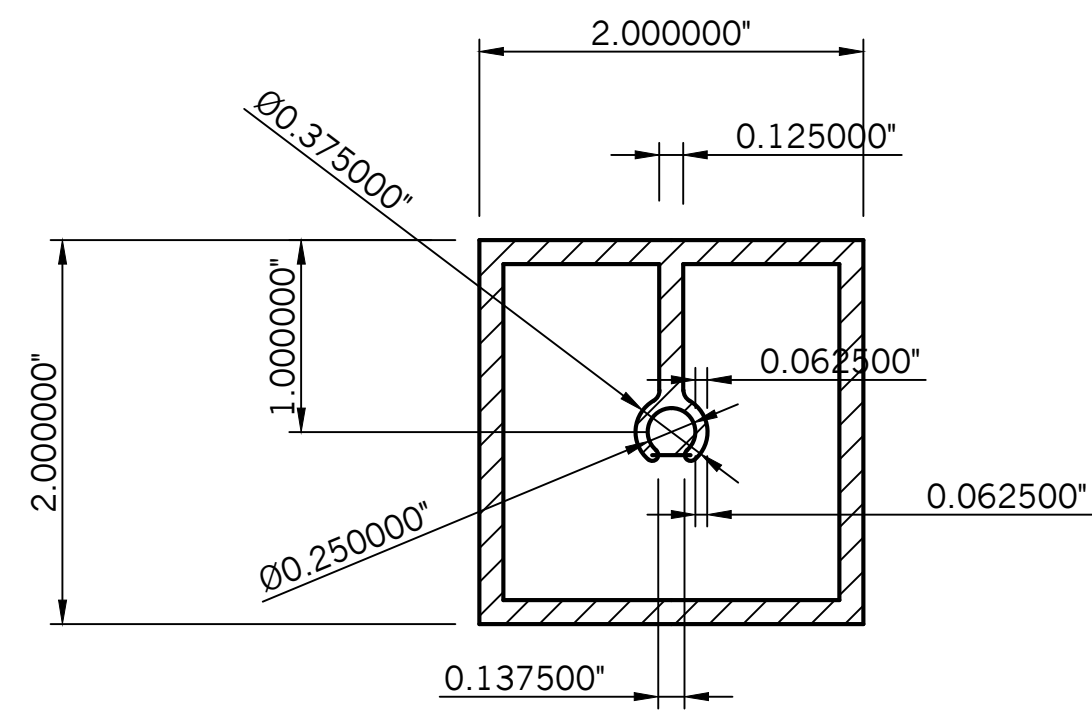
(LOCATED ONLY WHERE NOTED)

REVISION	DATE		120 Shadowlawn Drive, Fishers, Indiana 46038 Phone: (317) 842-2420 Fax: (317) 845-1328 Toll Free: (800) 328-4496 www.tuttleailings.com engineering@tuttleailings.com		
	BR		DESIGNER	INDIAN HILLS CONDO	
			CUSTOMER	A & L MANUFACTURING COMPANY, INC.	
			CONTRACTOR	CONTRACTOR	
			DETAILS	2500	
			FINISH	POWDER COAT	
	DR. DJC	DATE	OCT. 13	SCALE	AS NOTED
	ERECTOR	BY	OTHERS	NO.	PRINTS FOR
	FIELD CHECKED BY	OTHERS		DATE	10-31-13
	SHOP ORDER NO.			JOB NO.	13-1121
				DRAWING NO.	D-1

THESE DRAWINGS ARE THE PROPERTY OF TUTTLE RAILING SYSTEMS, FISHERS, INDIANA AND SHALL NOT BE REPRODUCED OR COPIED OR USED AS THE BASIS FOR THE MANUFACTURE OR SALE OF ITEMS SHOWN WITHOUT PERMISSION.  
THIS DRAWING IS TABCO'S INTERPRETATION OF THE ENGINEER'S/ARCHITECT'S DESIGN INTENT. ANY CODE NONCOMPLIANCE IS THE RESPONSIBILITY OF THE ENGINEER'S/ARCHITECTS.

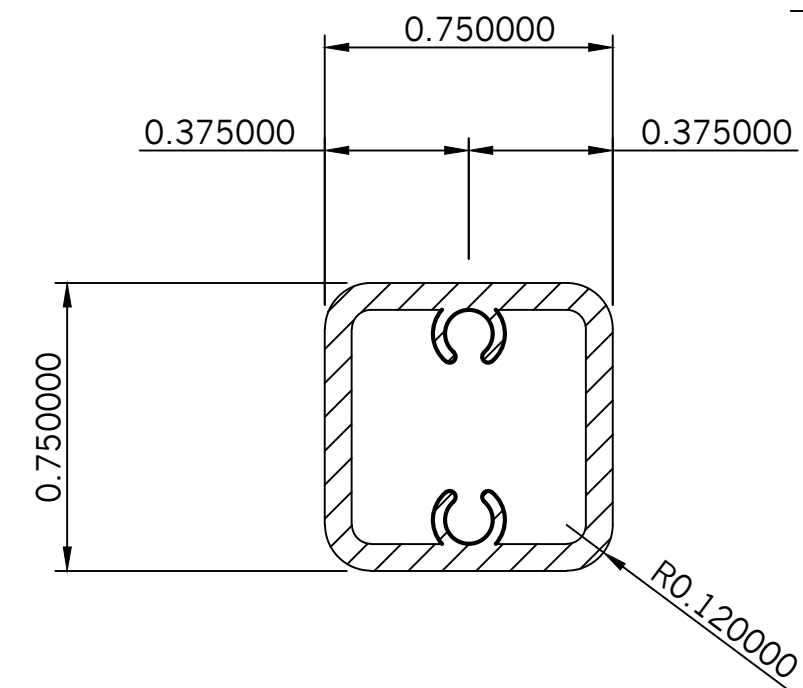


ACTUAL SIZE



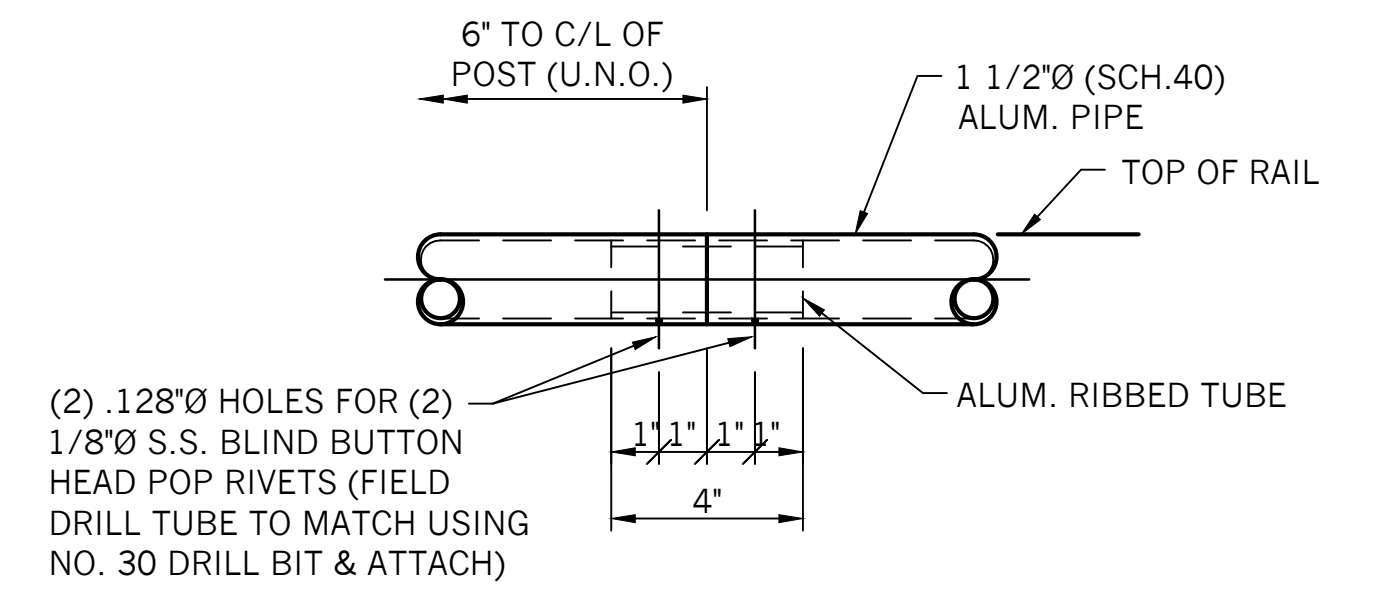
ALUM. POST SECTION

25-61



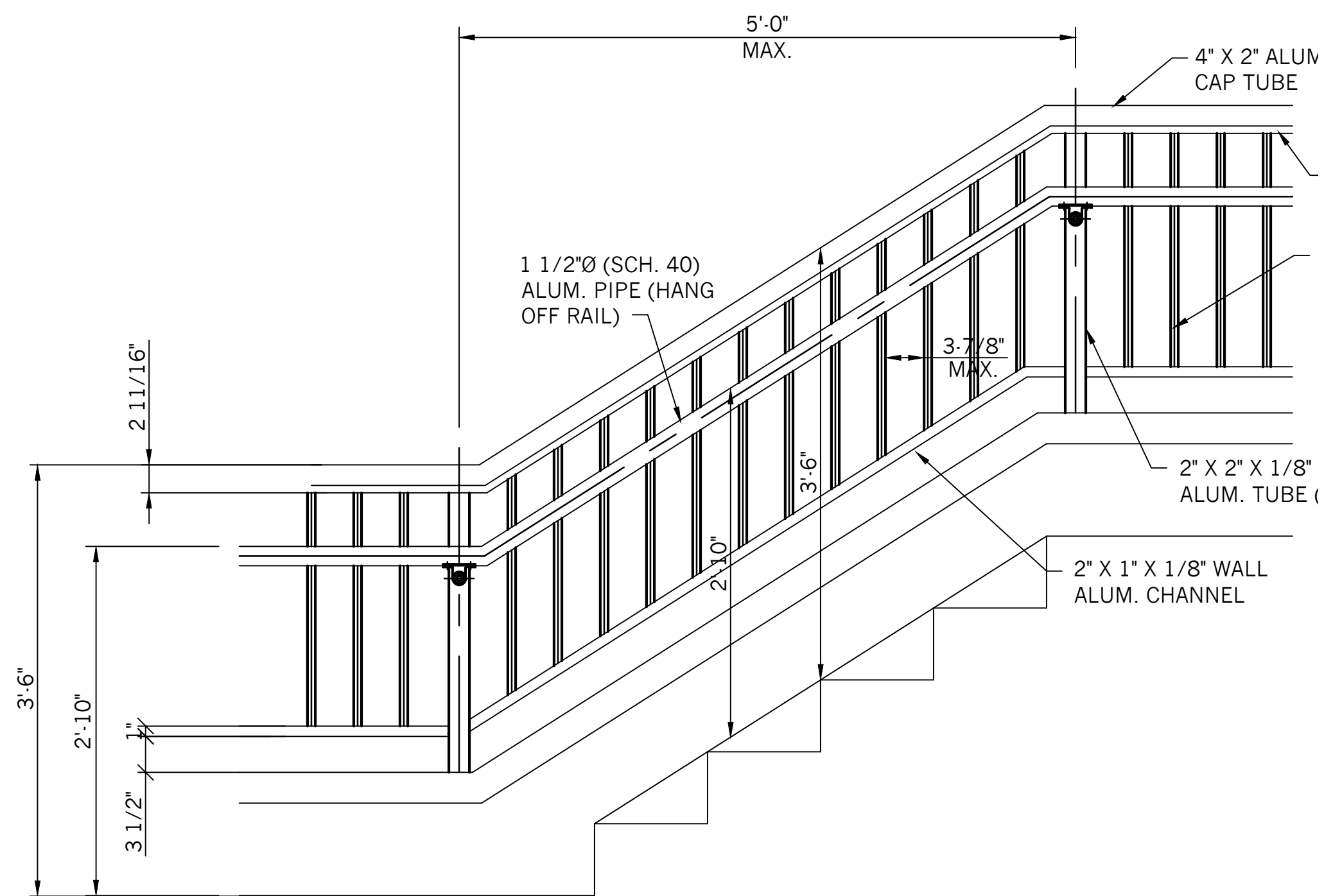
ALUM. PICKET SECTION

25-62

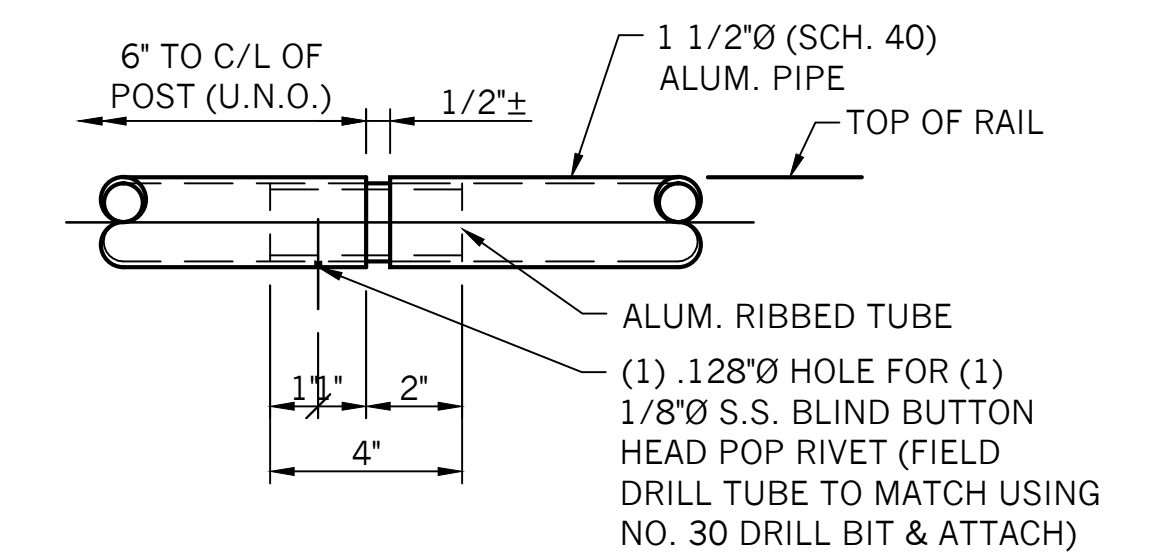


TYPICAL HANG-OFF FIELD JOINT

25-8H (LOCATED ONLY WHERE NOTED)

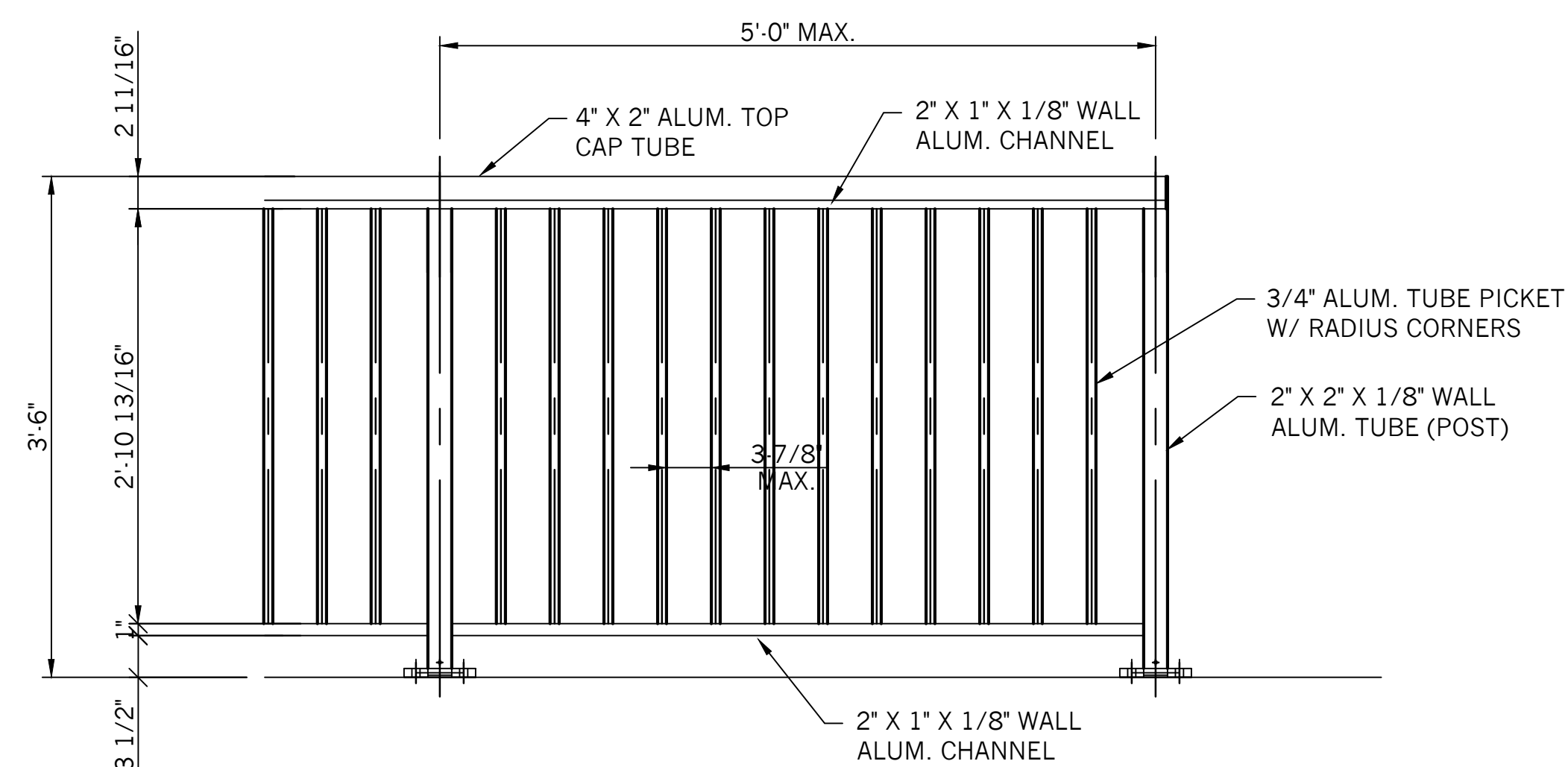


ELEVATION OF RAIL AT STAIRS

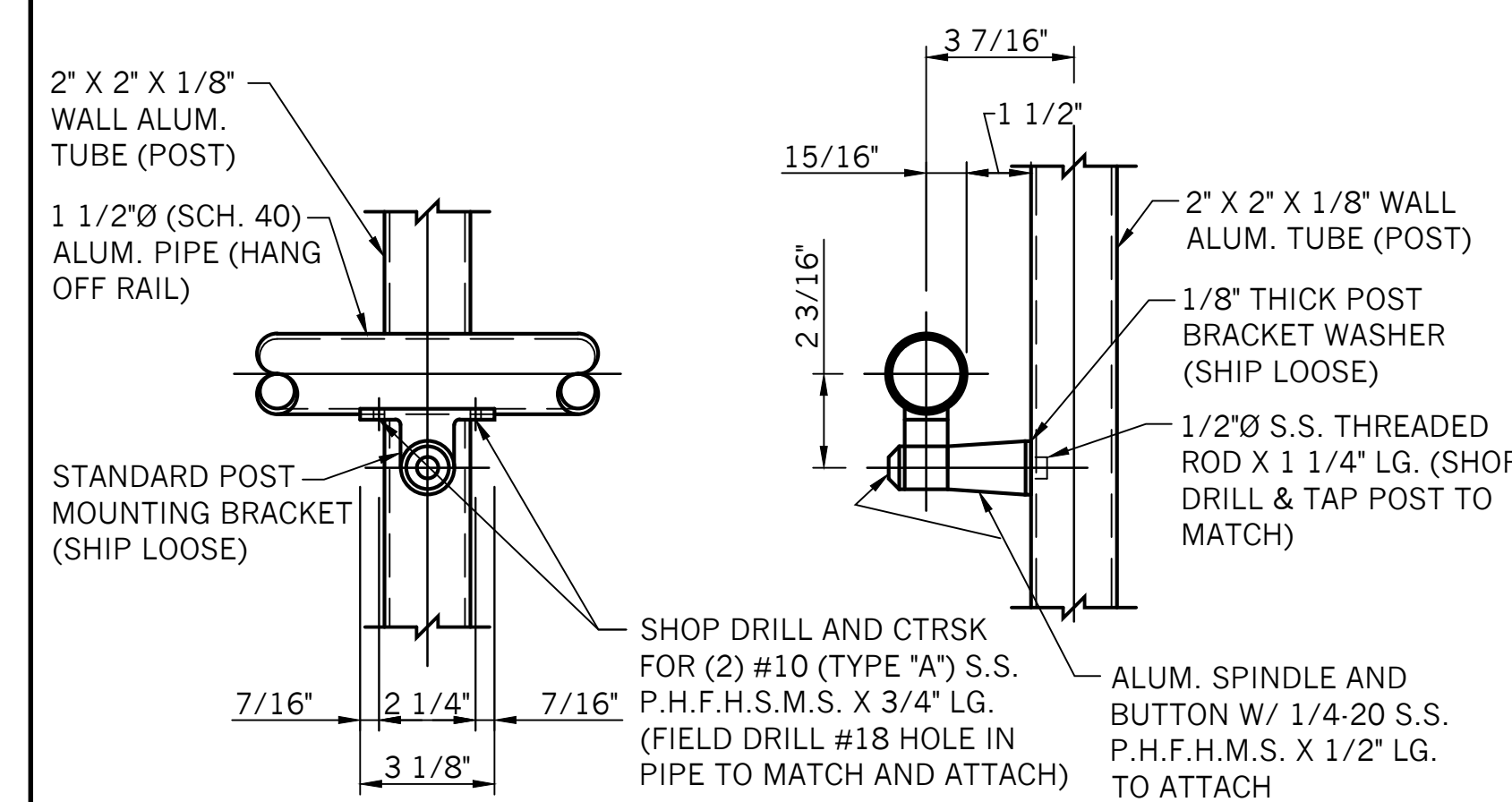


TYPICAL HANG-OFF EXPANSION JOINT

25-8 (TYPICAL AT BUILDING EXPANSION JOINT & AT 20'-0" MAX. O/C)

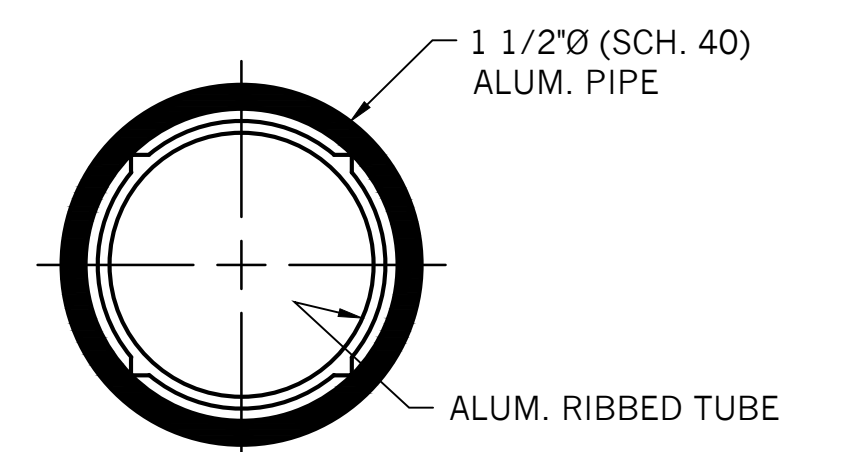


ELEVATION OF RAIL AT BALCONY



TYPICAL OFFSET RAIL CONNECTION

25-35B



RIBBED TUBE SECTION

25-10

REVISION	DATE	<p>120 Shadowlawn Drive, Fishers, Indiana 46038 Phone: (317) 842-2420 Fax: (317) 845-1328 Toll Free: (800) 328-4496 www.tuttlerailings.com engineering@tuttlerailings.com</p>	DESIGNER
	BY		INDIAN HILLS CONDO
		LOUISVILLE, KY	A & L MANUFACTURING COMPANY, INC.
		DETAILS 2500	CONTRACTOR
		FINISH POWDER COAT	
	DR. DJC	DATE OCT. 13	NO. PRINTS FOR
		SCALE AS NOTED	DATE 10-31-13
		ERECTOR BY OTHERS	APPROVAL
		FIELD CHECKED BY OTHERS	
		SHOP ORDER NO.	JOB NO.
			13-1121
			DRAWING NO.
			D-2

REFER TO CONTRACT DWG.