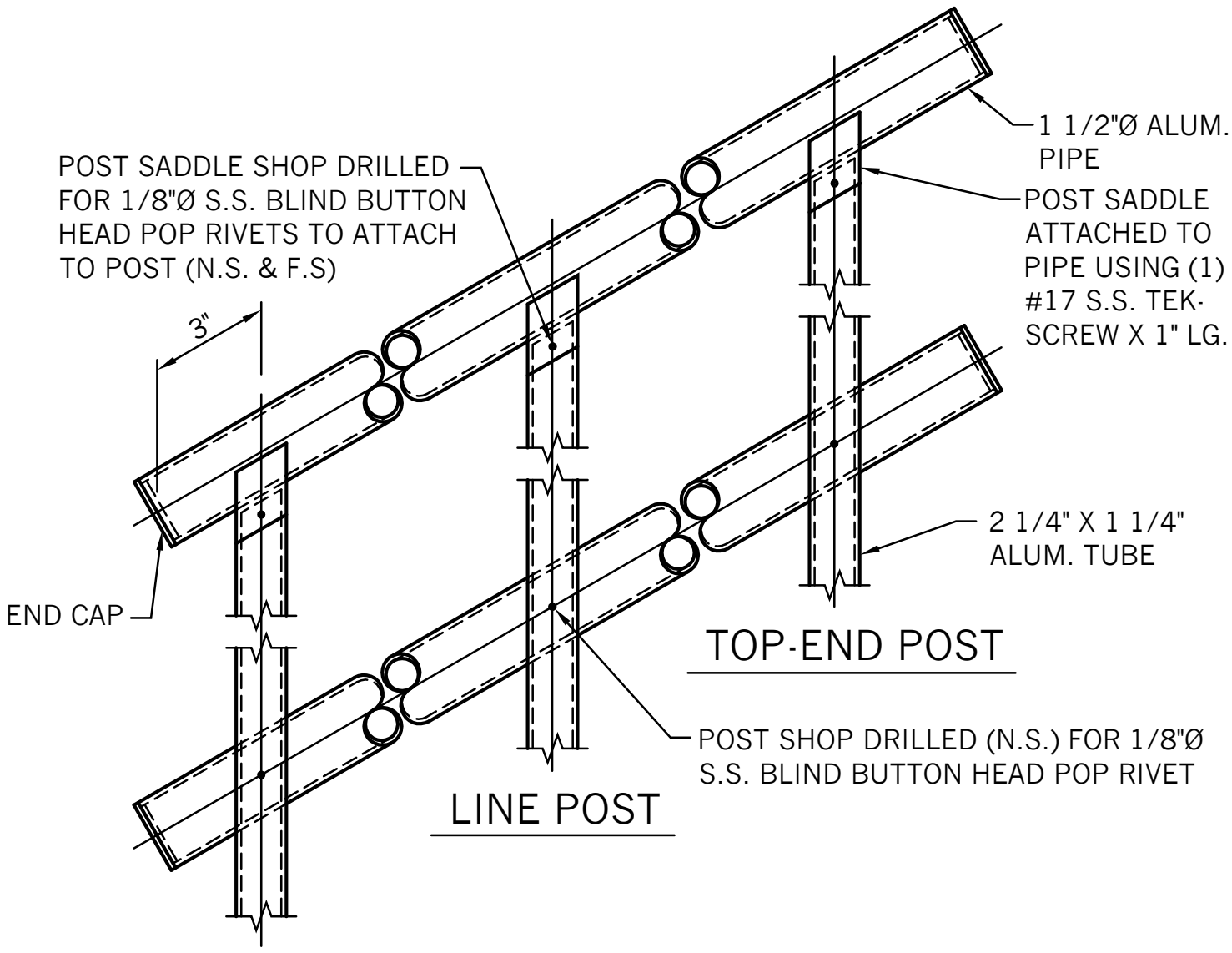
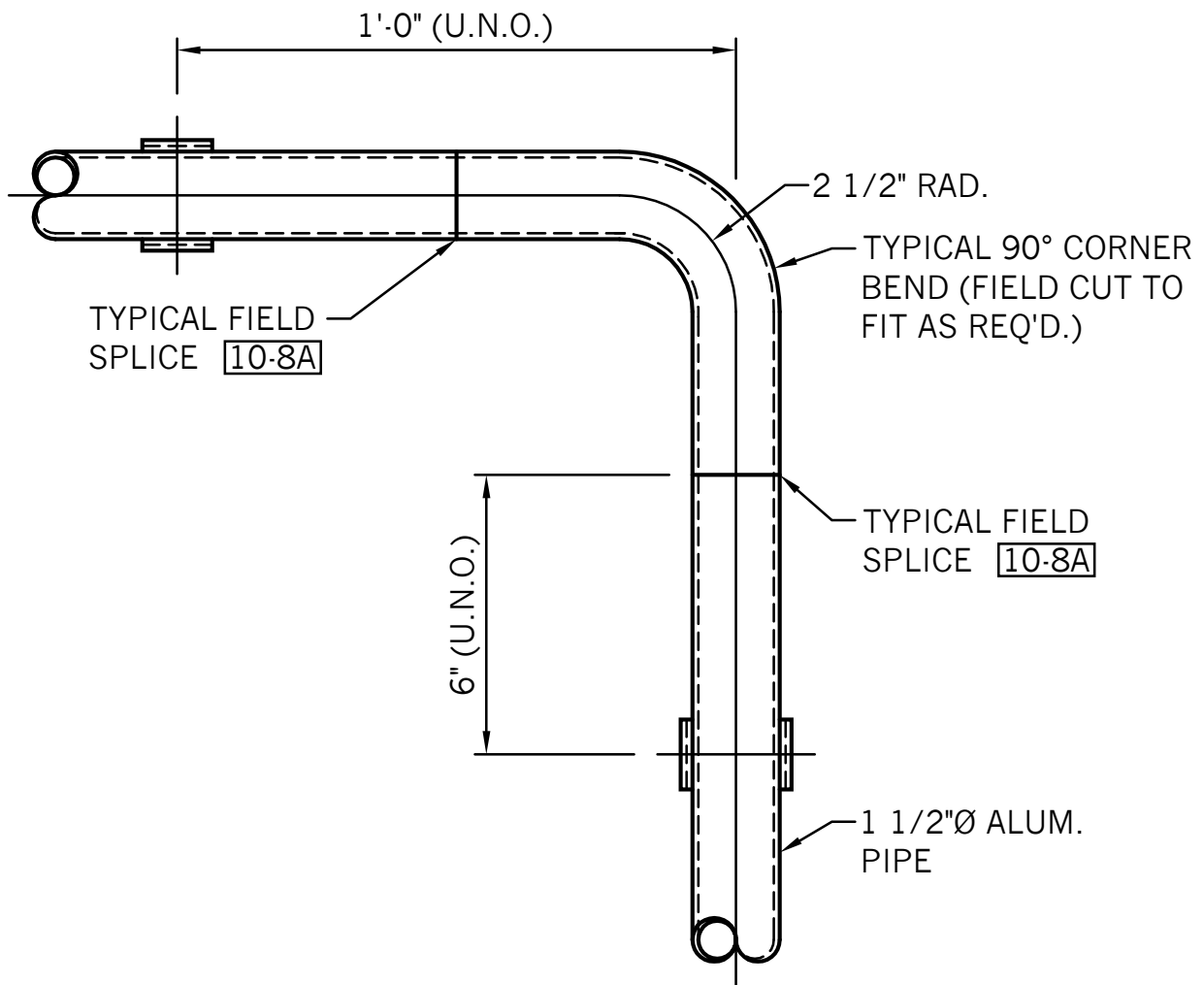


# REC. POST LEVEL RAIL CONNECTIONS



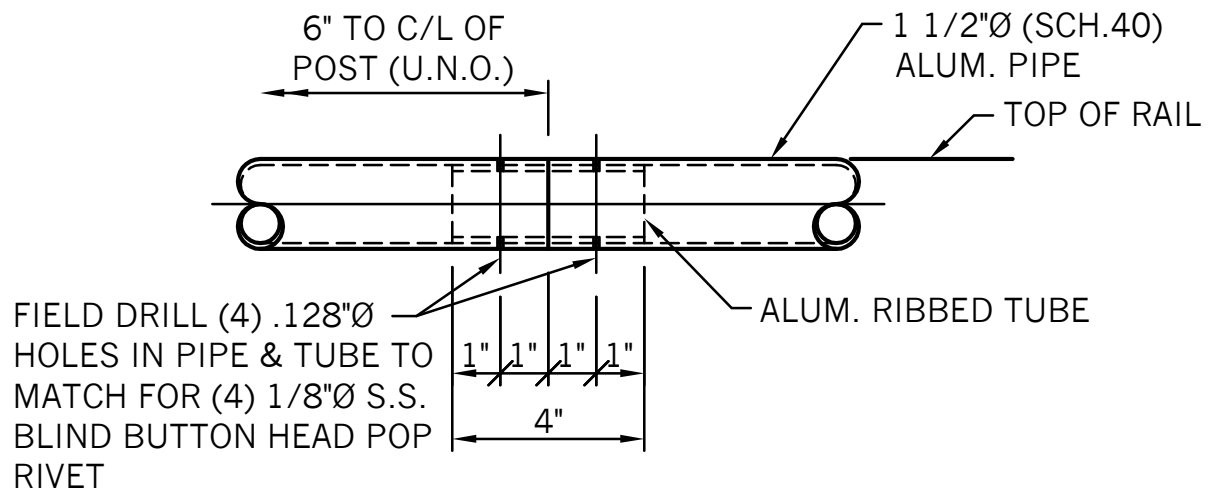
BOTTOM END POST

REC. POST RAKE RAIL CONNECTIONS



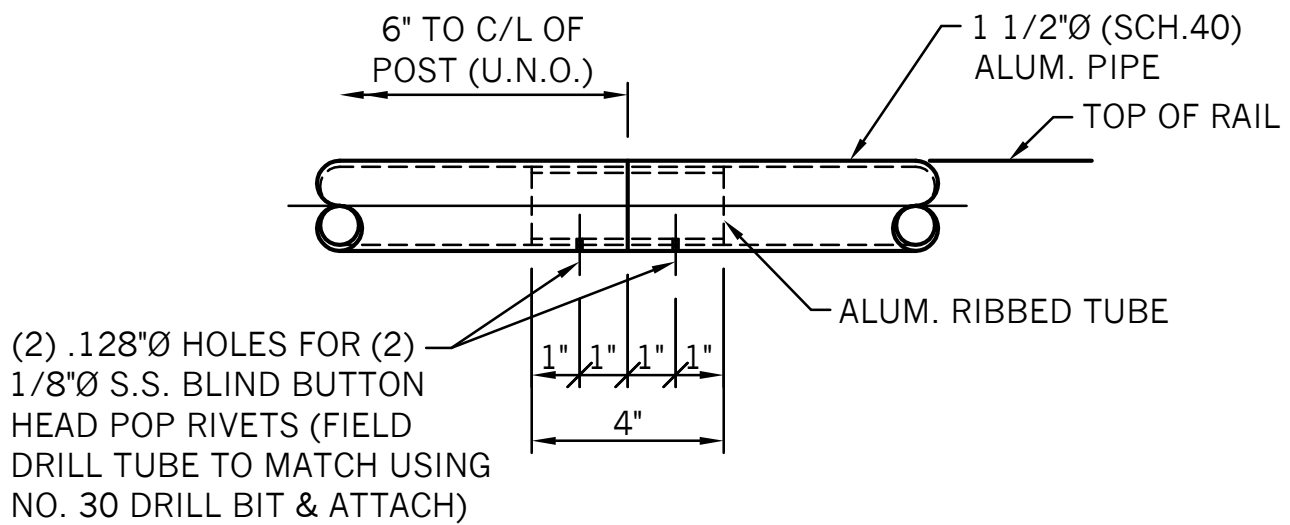
# TYPICAL CORNER

---

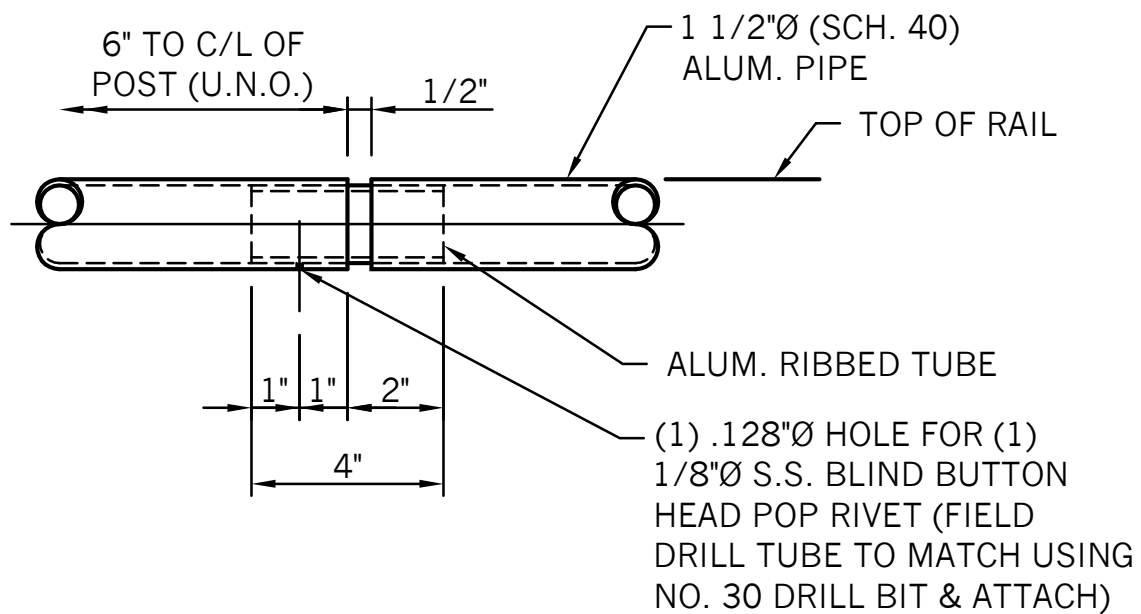


## FIELD SPLICE

(LOCATED AT CORNER BENDS, STAIR TRANSITIONS & LOOPS)



## FIELD JOINT



## EXPANSION JOINT

(TYPICAL AT BUILDING EXPANSION JOINT & AT 20'-0" MAX. O/C)